

The background is a vibrant yellow. It features several abstract, overlapping shapes in shades of blue and green. These shapes include rounded rectangles, elongated ovals, and curved bands. Interspersed among these shapes are several white circles of varying sizes, some of which are partially enclosed by the blue and green shapes. The overall composition is dynamic and modern.

IW Water Asset
Alterations



BUSCONNECTS DUBLIN CORE BUS CORRIDORS INFRASTRUCTURE WORKS

KIMMAGE TO CITY CENTRE CORE BUS CORRIDOR SCHEME

IW WATER ASSET ALTERATIONS, RECORDS AND PROPOSED WORKS.	
DRAWING SERIES NUMBER(S)	DRAWING SERIES DESCRIPTION
BCIDD-ROT-UTL_IX-0011_XX_00-DR-CU-0006	KIMMAGE TO CITY CENTRE CORE BUS CORRIDOR SCHEME. IW WATER ASSET ALTERATIONS. COVER SHEET
BCIDD-ROT-UTL_KP-0011_XX_00-DR-CU-0006	KIMMAGE TO CITY CENTRE CORE BUS CORRIDOR SCHEME. IW WATER ASSET ALTERATIONS. KEY PLAN
BCIDD-ROT-UTL_UW-0011_XX_00-DR-CU-0001 to 0014	KIMMAGE TO CITY CENTRE CORE BUS CORRIDOR SCHEME. IW WATER ASSET ALTERATIONS. DRAWINGS.

\\wddubp1u20191917117117-02_WIP08 MODELS01 CAD01 DWG03 STG 3 - STATUTORY PROCESS (M)01 PLANNING11 KIMMAGE/COVER SHEETS/BCIDD-ROT-UTL_IX-0011_XX_00-DR-CU-0006.dwg

Disclaimer
 a. © National Transport Authority (NTA) 2022. This drawing is confidential and the copyright in it is owned by NTA. This drawing must not be either loaned, copied or otherwise reproduced in whole or in part or used for any purpose without the prior permission of NTA.
 b. This drawing is to be used for the design element identified in the titleblock. Other information shown is to be considered indicative only. The drawing is to be read in conjunction with all other relevant design drawings.
 c. O.S. data used for plans are printed under © Ordnance Survey Ireland Government of Ireland. All rights reserved. Licence Number 2022/OSI_NMA_180 National Transport Authority. All elevations are in metres and relate to OSI Geoid Model (OSGM15) Mean Head. All Co-ordinates are in Irish Transverse Mercator Grid (ITM) as defined by OSI active local GPS station.
 d. Information concerning the position of apparatus shown on this drawing is based on drawings supplied by the utility owners and/or the utility works contractor, whilst every care has been taken in the preparation of this drawing, positions should be taken as approximate and are intended for general guidance only and no representation is made by the NTA as to the accuracy, completeness, sufficiency or otherwise of this drawing and the position of the apparatus. The information contained herein does not purport to be comprehensive or final as the apparatus is subject to being altered and/or superceded. Recipients should not rely on this information. Any liabilities are hereby expressly disclaimed.
 e. The information contained herein has been provided by the NTA but does not purport to be comprehensive or final. Recipients should not rely on the information. Neither the NTA nor any of its directors, officers, employees, agents, stakeholders or advisers make any representation or warranty as to, or accept any liability or responsibility in relation to, the adequacy, accuracy, reasonableness or completeness of the information provided as part of this document or any matter on which the information is based (including but not limited to loss or damage arising as a result of reliance by recipients on the information or any part of it). Any liabilities are hereby expressly disclaimed.

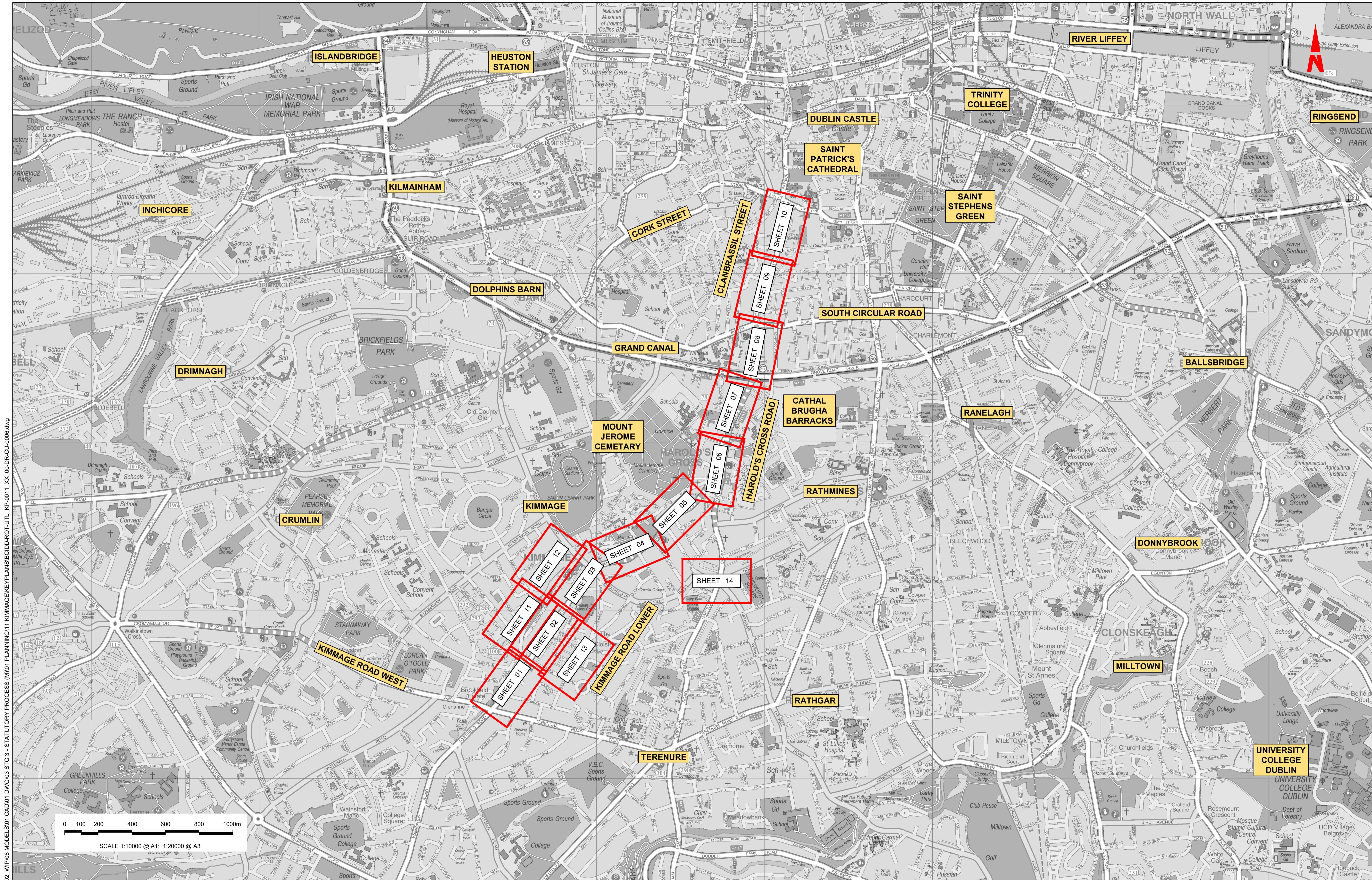


Rev	Date	Drm	Chk'd	App'd	Description
M01	FEB 2023	CG	SMG	SMG	ISSUE FOR PHASE 4: PLANNING

Client NTA Údarás Náisiúnta Iompair National Transport Authority		Engineering Designer ROD TYP SA RUGHAN & O'DONOVAN		
Date FEB 2023	Scale NTS @ A1 NTS @ A3	Drawn CG	Checked SMG	Approved SMG
Programme Code BCIDD	Originator Code ROT	QMS Code		

Programme Title BUSCONNECTS DUBLIN CORE BUS CORRIDORS INFRASTRUCTURE WORKS			
Drawing Title KIMMAGE TO CITY CENTRE CORE BUS CORRIDOR SCHEME IW WATER ASSET ALTERATIONS COVER SHEET			
Drawing File Name BCIDD-ROT-UTL_IX-0011_XX_00-DR-CU-0006	Sheet Number 06 of 0	Status A	Rev M01

DO NOT SCALE USE FIGURED DIMENSIONS ONLY



W:\000000\191117-02_WIP08 MODELS\01 CAD\01 PLANNING\11 KIMMAGE\PLANS\BCIDD-ROT-UTL_KP-0011_XX_00-DR-CU-0006.dwg
 0 100 200 400 600 800 1000m
 SCALE 1:10000 @ A1; 1:20000 @ A3

1. The information contained herein has been provided by the NTA but does not purport to be comprehensive or final. Recipients should not rely on the information. Neither the NTA nor any of its directors, officers, employees, agents, stakeholders or advisers make any representation or warranty as to, or accept any liability or responsibility in relation to, the accuracy, completeness, sufficiency or otherwise of this information or any part of it. Any liabilities are hereby expressly disclaimed.

2. The information contained herein has been provided by the NTA but does not purport to be comprehensive or final. Recipients should not rely on the information. Neither the NTA nor any of its directors, officers, employees, agents, stakeholders or advisers make any representation or warranty as to, or accept any liability or responsibility in relation to, the accuracy, completeness, sufficiency or otherwise of this information or any part of it. Any liabilities are hereby expressly disclaimed.

3. OS data used for plans are printed under © Ordnance Survey Ireland Government of Ireland. All rights reserved. Licence Number 2022/OSI_NMA_180 National Transport Authority. All elevations are in metres and relate to OSI Geoid Model (OSGM15) Mean Head. All Co-ordinates are in Irish Transverse Mercator Grid (ITM) as defined by OSI active local GPS station.

4. Information concerning the position of apparatus shown on this drawing is based on drawings supplied by the utility owners and/or the utility works contractor, whilst every care has been taken in the preparation of this drawing, positions should be taken as approximate and are intended for general guidance only and no representation is made by the NTA as to the accuracy, completeness, sufficiency or otherwise of this information or any part of it. Any liabilities are hereby expressly disclaimed.

Rev	Date	Drn	Chk'd	App'd	Description
M01	FEB 2023	CG	SMG	SMC	ISSUE FOR PHASE 4: PLANNING

Project Ireland 2040
 Building Ireland's Future

NTA
 Údarás Náisiúnta Iompair
 National Transport Authority

Engineering Designer
CIROD
 TYPSA

Date	Scale	Drawn	Checked	Approved
FEB 2023	1:10,000 @ A1 1:20,000 @ A3	CG	SMG	SMG

Programme Title	Drawing Title	Drawing File Name	Sheet Number	Status	Rev
BUSCONNECTS DUBLIN CORE BUS CORRIDORS INFRASTRUCTURE WORKS	KIMMAGE TO CITY CENTRE CORE BUS CORRIDOR SCHEME IW WATER ASSET ALTERATIONS KEY PLAN	BCIDD-ROT-UTL_KP-0011_XX_00-DR-CU-0006	06 of 01	A	M01

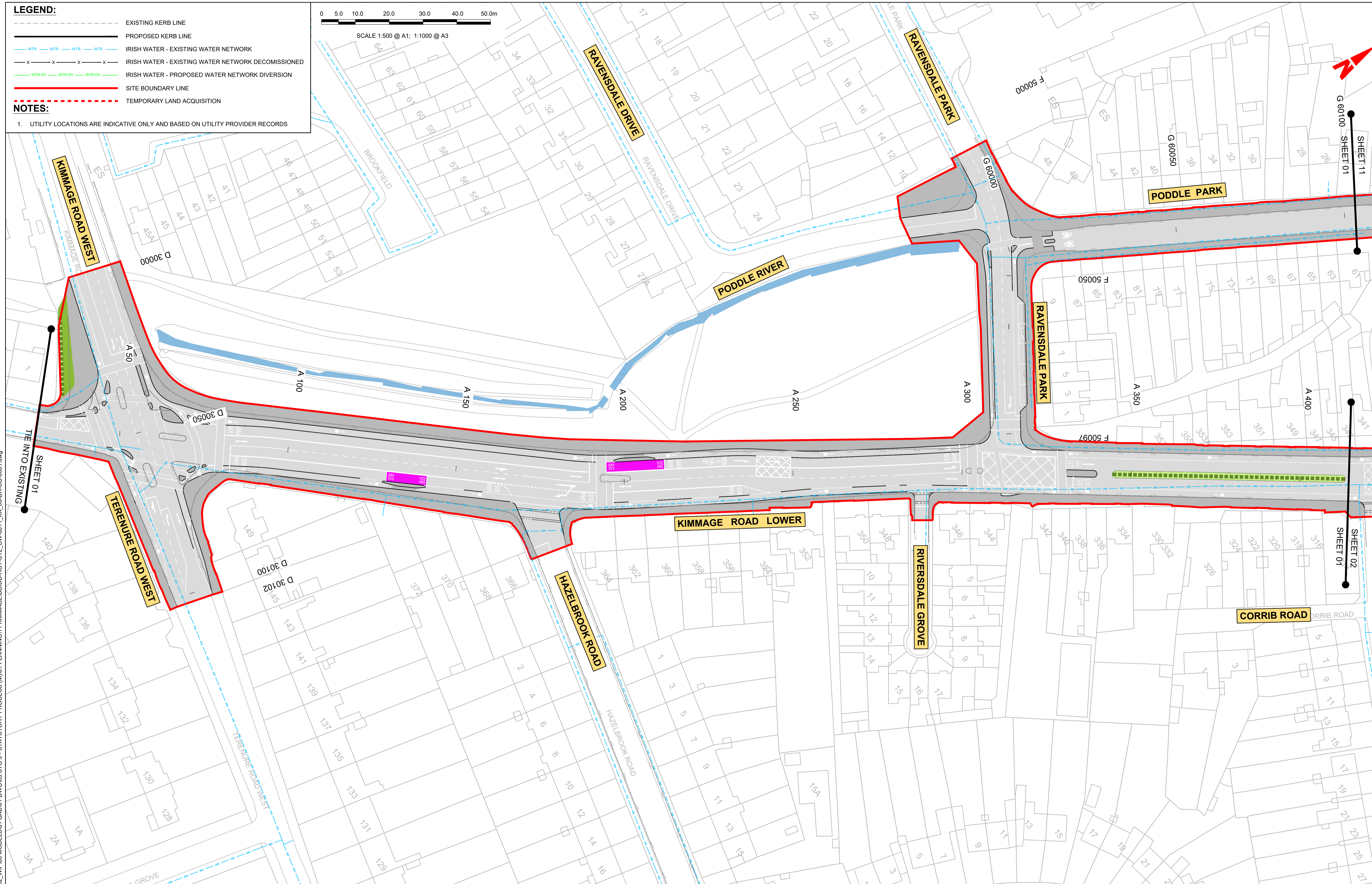
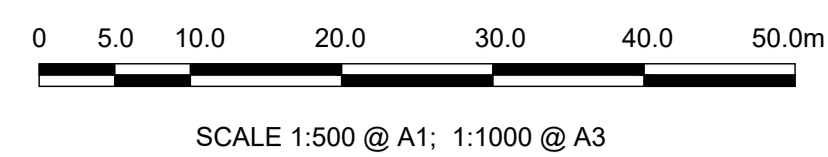
DO NOT SCALE USE FIGURED DIMENSIONS ONLY

LEGEND:

- EXISTING KERB LINE
- PROPOSED KERB LINE
- IRISH WATER - EXISTING WATER NETWORK
- IRISH WATER - EXISTING WATER NETWORK DECOMMISSIONED
- IRISH WATER - PROPOSED WATER NETWORK DIVERSION
- SITE BOUNDARY LINE
- TEMPORARY LAND ACQUISITION

NOTES:

- UTILITY LOCATIONS ARE INDICATIVE ONLY AND BASED ON UTILITY PROVIDER RECORDS



\\produbhp1u2019171719117-02_WIP08 MODELS01 CAD01 DWG003 STG 3 - STATUTORY PROCESS (M)01 PLANNING11 KIMMAGE/BCIDD-ROT-UTL_UW-0011_XX_00-DR-CU-0001.dwg

Disclaimer

a. © National Transport Authority (NTA) 2022. This drawing is confidential and the copyright in it is owned by NTA. This drawing must not be either loaned, copied or otherwise reproduced in whole or in part or used for any purpose without the prior permission of NTA.

b. This drawing is to be used for the design element identified in the titleblock. Other information shown is to be considered indicative only. The drawing is to be read in conjunction with all other relevant design drawings.

c. O.S. data used for plans are printed under © Ordnance Survey Ireland Government of Ireland. All rights reserved. Licence Number 2022/OSI_NMA_180 National Transport Authority. All elevations are in metres and relate to OSI Geoid Model (OSGM15) Mean Head. All Co-ordinates are in Irish Transverse Mercator Grid (ITM) as defined by OSI active local GPS station.

d. Information concerning the position of apparatus shown on this drawing is based on drawings supplied by the utility owners and/or the utility works contractor, whilst every care has been taken in the preparation of this drawing, positions should be taken as approximate and are intended for general guidance only and no representation is made by the NTA as to the accuracy, completeness, sufficiency or otherwise of this drawing and the position of the apparatus. The information contained herein does not purport to be comprehensive or final as the apparatus is subject to being altered and/or superceded. Recipients should not rely on this information. Any liabilities are hereby expressly disclaimed.

e. The information contained herein has been provided by the NTA but does not purport to be comprehensive or final. Recipients should not rely on the information. Neither the NTA nor any of its directors, officers, employees, agents, stakeholders or advisers make any representation or warranty as to, or accept any liability or responsibility in relation to, the adequacy, accuracy, reasonableness or completeness of the information provided as part of this document or any matter on which the information is based (including but not limited to loss or damage arising as a result of reliance by recipients on the information or any part of it). Any liabilities are hereby expressly disclaimed.



Rev	Date	Drn	Chk'd	App'd	Description
M01	FEB 2023	DS	EE	SMG	ISSUED FOR PHASE 4: PLANNING

Client: **NTA**
Údarás Náisiúnta Iompair
National Transport Authority

Date: FEB 2023
Scale: 1:500 @ A1
1:1000 @ A3

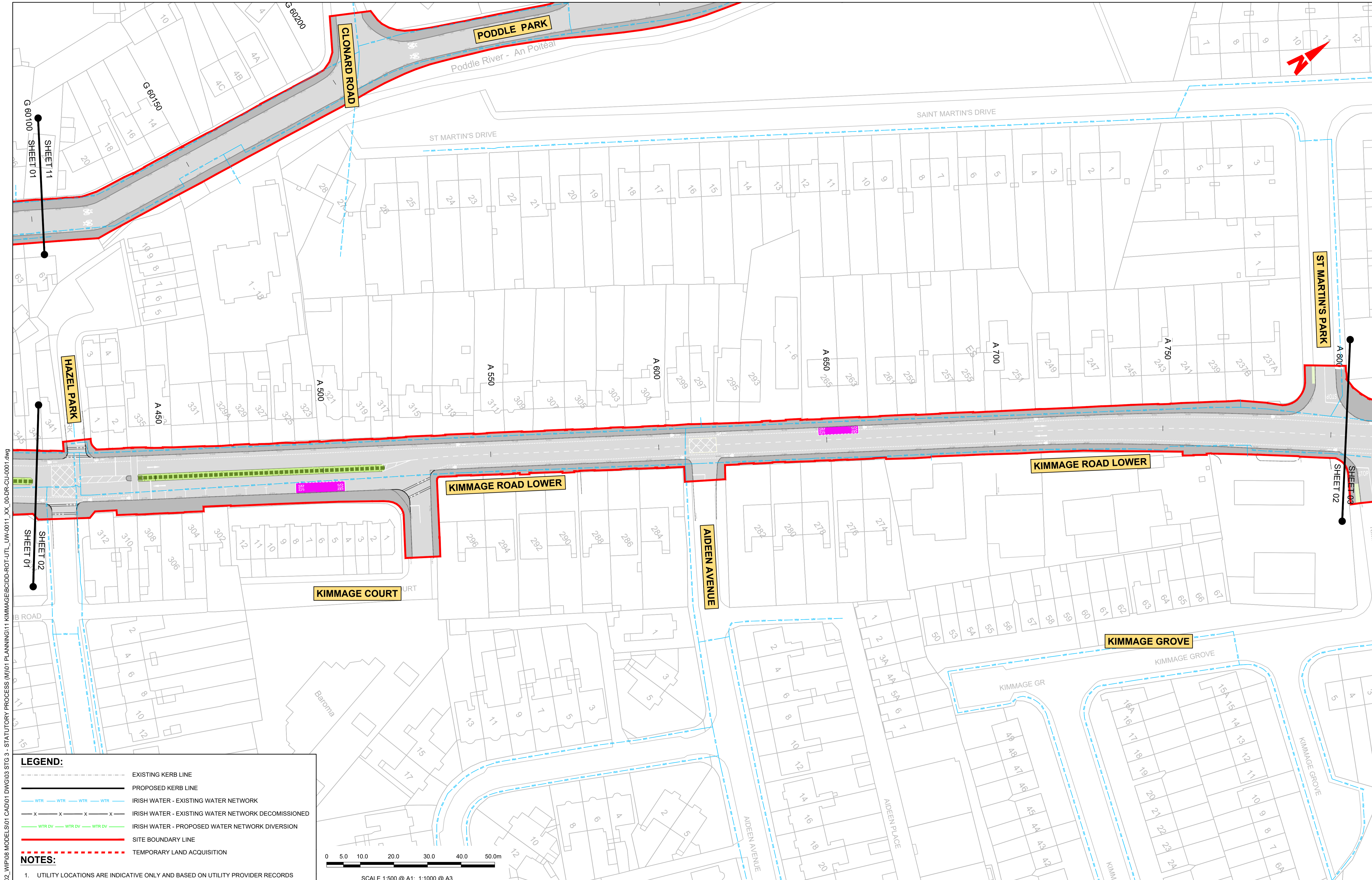
Programme Code: BCIDD
Originator Code: ROT

Engineering Designer: **CIROD**
TYPSA

Drawn: DS
Checked: EE
Approved: SMG

Programme Title BUSCONNECTS DUBLIN CORE BUS CORRIDORS INFRASTRUCTURE WORKS			
Drawing Title KIMMAGE TO CITY CENTRE CORE BUS CORRIDOR SCHEME IW WATER ASSET ALTERATIONS			
Drawing File Name BCIDD-ROT-UTL_UW-0011_XX_00-DR-CU-0001	Sheet Number 01 of 14	Status A	Rev M01

DO NOT SCALE USE FIGURED DIMENSIONS ONLY

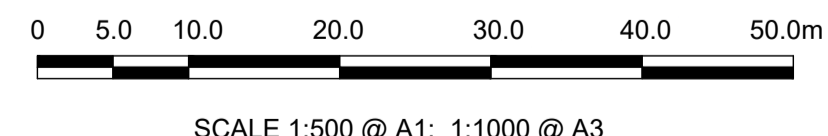


LEGEND:

- EXISTING KERB LINE
- PROPOSED KERB LINE
- WTR IRISH WATER - EXISTING WATER NETWORK
- x-x-x-x IRISH WATER - EXISTING WATER NETWORK DECOMMISSIONED
- WTR DV IRISH WATER - PROPOSED WATER NETWORK DIVERSION
- SITE BOUNDARY LINE
- TEMPORARY LAND ACQUISITION

NOTES:

- UTILITY LOCATIONS ARE INDICATIVE ONLY AND BASED ON UTILITY PROVIDER RECORDS



W:\000000\19171717-02_WIP\08 MODELS\01 CAD\01 PLANNING\11 KIMMAGE\BCIDD-ROT-UTL_UW-0011_XX_00-DR-CU-0001.dwg
 SHEET 01 SHEET 02 SHEET 03 SHEET 04 SHEET 05 SHEET 06 SHEET 07 SHEET 08 SHEET 09 SHEET 10 SHEET 11 SHEET 12 SHEET 13 SHEET 14 SHEET 15 SHEET 16 SHEET 17 SHEET 18 SHEET 19 SHEET 20 SHEET 21 SHEET 22 SHEET 23 SHEET 24 SHEET 25 SHEET 26 SHEET 27 SHEET 28 SHEET 29 SHEET 30 SHEET 31 SHEET 32 SHEET 33 SHEET 34 SHEET 35 SHEET 36 SHEET 37 SHEET 38 SHEET 39 SHEET 40 SHEET 41 SHEET 42 SHEET 43 SHEET 44 SHEET 45 SHEET 46 SHEET 47 SHEET 48 SHEET 49 SHEET 50 SHEET 51 SHEET 52 SHEET 53 SHEET 54 SHEET 55 SHEET 56 SHEET 57 SHEET 58 SHEET 59 SHEET 60 SHEET 61 SHEET 62 SHEET 63 SHEET 64 SHEET 65 SHEET 66 SHEET 67 SHEET 68 SHEET 69 SHEET 70 SHEET 71 SHEET 72 SHEET 73 SHEET 74 SHEET 75 SHEET 76 SHEET 77 SHEET 78 SHEET 79 SHEET 80 SHEET 81 SHEET 82 SHEET 83 SHEET 84 SHEET 85 SHEET 86 SHEET 87 SHEET 88 SHEET 89 SHEET 90 SHEET 91 SHEET 92 SHEET 93 SHEET 94 SHEET 95 SHEET 96 SHEET 97 SHEET 98 SHEET 99 SHEET 100

Disclaimer

a. © National Transport Authority (NTA) 2022. This drawing is confidential and the copyright in it is owned by NTA. This drawing must not be either loaned, copied or otherwise reproduced in whole or in part or used for any purpose without the prior permission of NTA.

b. This drawing is to be used for the design element identified in the titleblock. Other information shown is to be considered indicative only. The drawing is to be read in conjunction with all other relevant design drawings.

c. O.S. data used for plans are printed under © Ordnance Survey Ireland Government of Ireland. All rights reserved. Licence Number 2022/OSI_NMA_180 National Transport Authority. All elevations are in metres and relate to OSI Geoid Model (OSGM15) Mean Head. All Co-ordinates are in Irish Transverse Mercator Grid (ITM) as defined by OSI active local GPS station.

d. Information concerning the position of apparatus shown on this drawing is based on drawings supplied by the utility owners and/or the utility works contractor, whilst every care has been taken in the preparation of this drawing, positions should be taken as approximate and are intended for general guidance only and no representation is made by the NTA as to the accuracy, completeness, sufficiency or otherwise of this drawing and the position of the apparatus. The information contained herein does not purport to be comprehensive or final as the apparatus is subject to being altered and/or superceded. Recipients should not rely on this information. Any liabilities are hereby expressly disclaimed.

e. The information contained herein has been provided by the NTA but does not purport to be comprehensive or final. Recipients should not rely on the information. Neither the NTA nor any of its directors, officers, employees, agents, stakeholders or advisers make any representation or warranty as to, or accept any liability or responsibility in relation to, the adequacy, accuracy, reasonableness or completeness of the information provided as part of this document or any matter on which the information is based (including but not limited to loss or damage arising as a result of reliance by recipients on the information or any part of it). Any liabilities are hereby expressly disclaimed.

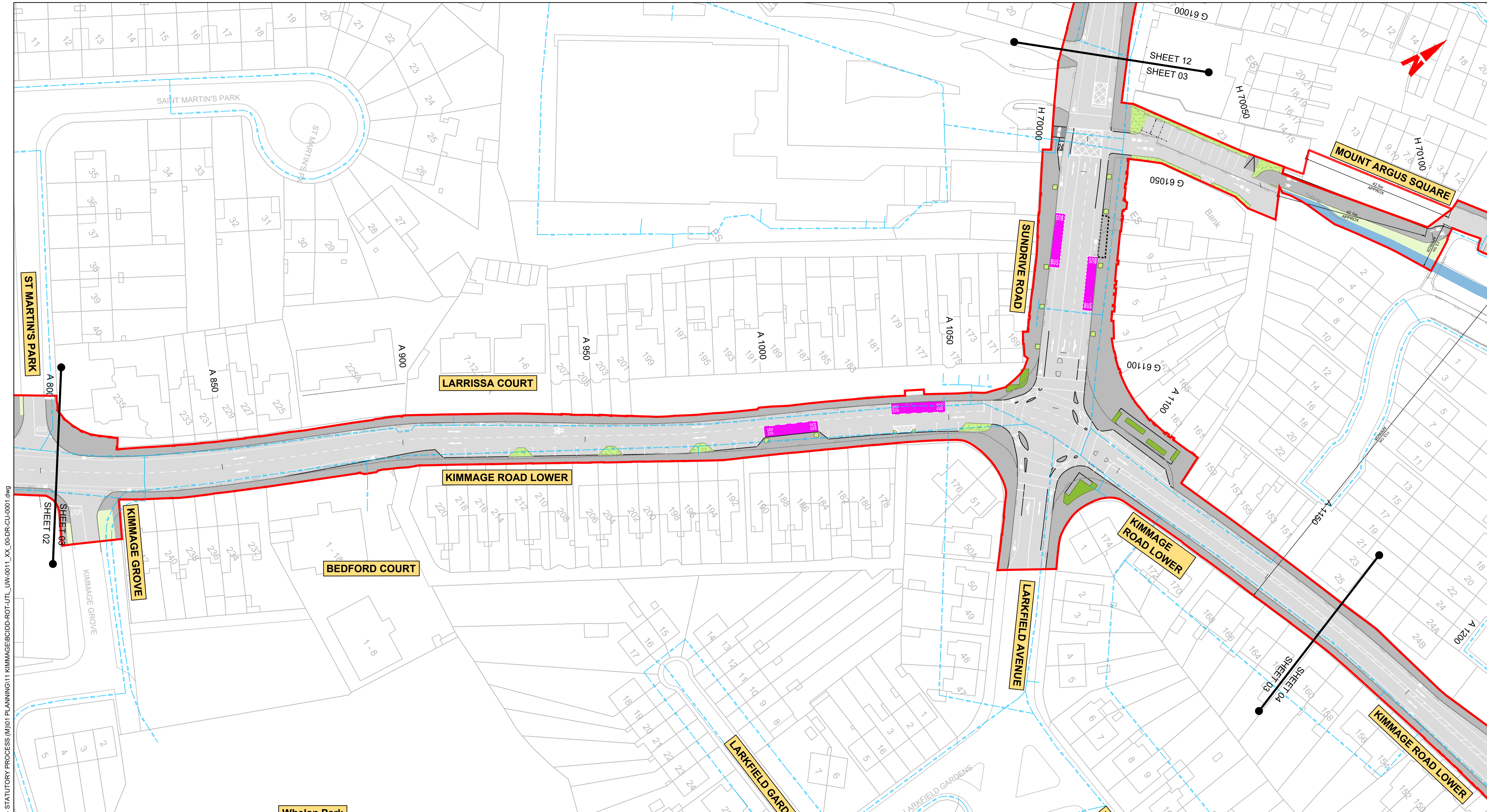


Rev	Date	Drn	Chk'd	App'd	Description
M01	FEB 2023	DS	EE	SMG	ISSUED FOR PHASE 4: PLANNING

NTA Údarás Náisiúnta Iompair National Transport Authority		Engineering Designer CIROD TYPSA		
Date	Scale	Drawn	Checked	Approved
FEB 2023	1:500 @ A1 1:1000 @ A3	DS	EE	SMG
Programme Code	Originator Code	QMS Code		
BCIDD	ROT			

Programme Title BUSCONNECTS DUBLIN CORE BUS CORRIDORS INFRASTRUCTURE WORKS			
Drawing Title KIMMAGE TO CITY CENTRE CORE BUS CORRIDOR SCHEME IW WATER ASSET ALTERATIONS			
Drawing File Name	Sheet Number	Status	Rev
BCIDD-ROT-UTL_UW-0011_XX_00-DR-CU-0002	02 of 14	A	M01

DO NOT SCALE USE FIGURED DIMENSIONS ONLY

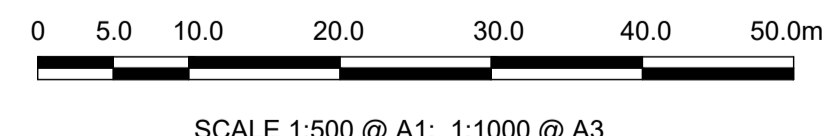


LEGEND:

- EXISTING KERB LINE
- PROPOSED KERB LINE
- WTR IRISH WATER - EXISTING WATER NETWORK
- x-x-x-x IRISH WATER - EXISTING WATER NETWORK DECOMMISSIONED
- WTR DV IRISH WATER - PROPOSED WATER NETWORK DIVERSION
- SITE BOUNDARY LINE
- - - - - TEMPORARY LAND ACQUISITION

NOTES:

- UTILITY LOCATIONS ARE INDICATIVE ONLY AND BASED ON UTILITY PROVIDER RECORDS



Disclaimer

a. © National Transport Authority (NTA) 2022. This drawing is confidential and the copyright in it is owned by NTA. This drawing must not be either loaned, copied or otherwise reproduced in whole or in part or used for any purpose without the prior permission of NTA.

b. This drawing is to be used for the design element identified in the titleblock. Other information shown is to be considered indicative only. The drawing is to be read in conjunction with all other relevant design drawings.

c. O.S. data used for plans are printed under © Ordnance Survey Ireland Government of Ireland. All rights reserved. Licence Number 2022/OSI_NMA_180 National Transport Authority. All elevations are in metres and relate to OSI Geoid Model (OSGM15) Mean Head. All Co-ordinates are in Irish Transverse Mercator Grid (ITM) as defined by OSI active local GPS station.

d. Information concerning the position of apparatus shown on this drawing is based on drawings supplied by the utility owners and/or the utility works contractor, whilst every care has been taken in the preparation of this drawing, positions should be taken as approximate and are intended for general guidance only and no representation is made by the NTA as to the accuracy, completeness, sufficiency or otherwise of this drawing and the position of the apparatus. The information contained herein does not purport to be comprehensive or final as the apparatus is subject to being altered and/or superseded. Recipients should not rely on this information. Any liabilities are hereby expressly disclaimed.

e. The information contained herein has been provided by the NTA but does not purport to be comprehensive or final. Recipients should not rely on the information. Neither the NTA nor any of its directors, officers, employees, agents, stakeholders or advisers make any representation or warranty as to, or accept any liability or responsibility in relation to, the adequacy, accuracy, reasonableness or completeness of the information provided as part of this document or any matter on which the information is based (including but not limited to loss or damage arising as a result of reliance by recipients on the information or any part of it). Any liabilities are hereby expressly disclaimed.



Rev	Date	Drn	Chk'd	App'd	Description
M01	FEB 2023	DS	EE	SMG	ISSUED FOR PHASE 4: PLANNING

Client: **NTA**
Udarás Náisiúnta Iompair
National Transport Authority

Engineering Designer: **CIROD**
TYPSA

Date: FEB 2023
Scale: 1:500 @ A1
1:1000 @ A3

Programme Code: BCIDD
Originator Code: ROT

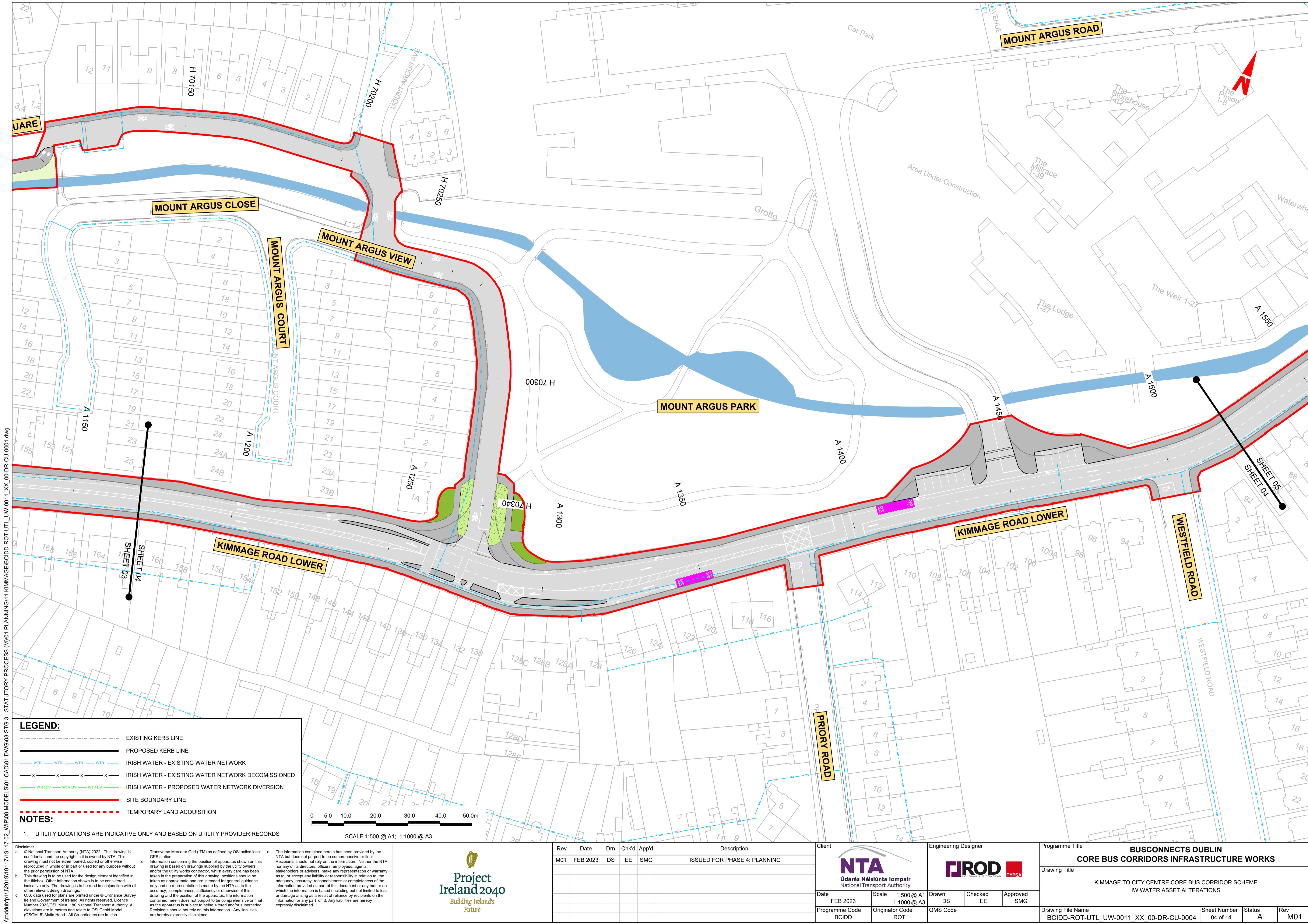
Drawn: DS
Checked: EE
Approved: SMG

QMS Code

Programme Title: BUSCONNECTS DUBLIN CORE BUS CORRIDORS INFRASTRUCTURE WORKS			
Drawing Title: KIMMAGE TO CITY CENTRE CORE BUS CORRIDOR SCHEME IW WATER ASSET ALTERATIONS			
Drawing File Name: BCIDD-ROT-UTL_UW-0011_XX_00-DR-CU-0003	Sheet Number: 03 of 14	Status: A	Rev: M01

DO NOT SCALE USE FIGURED DIMENSIONS ONLY

\\wddubp1\U201917\17-02_WIP\08 MODELS\01 CAD\01 PLANNING\11 KIMMAGE\BCIDD-ROT-UTL_UW-0011_XX_00-DR-CU-0001.dwg

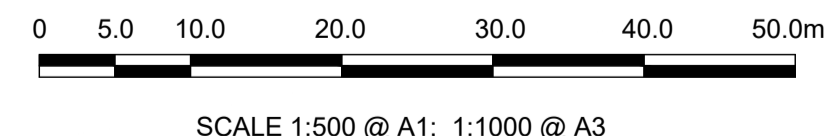


LEGEND:

- EXISTING KERB LINE
- PROPOSED KERB LINE
- IRISH WATER - EXISTING WATER NETWORK
- IRISH WATER - EXISTING WATER NETWORK DECOMMISSIONED
- IRISH WATER - PROPOSED WATER NETWORK DIVERSION
- SITE BOUNDARY LINE
- TEMPORARY LAND ACQUISITION

NOTES:

- UTILITY LOCATIONS ARE INDICATIVE ONLY AND BASED ON UTILITY PROVIDER RECORDS



Disclaimer
 a. © National Transport Authority (NTA) 2022. This drawing is confidential and the copyright in it is owned by NTA. This drawing must not be either loaned, copied or otherwise reproduced in whole or in part or used for any purpose without the prior permission of NTA.
 b. This drawing is to be used for the design element identified in the title block. Other information shown is to be considered indicative only. The drawing is to be read in conjunction with all other relevant design drawings.
 c. O.S. data used for plans are printed under © Ordnance Survey Ireland Government of Ireland. All rights reserved. Licence Number 2022/OSI_NMA_180 National Transport Authority. All elevations are in metres and relate to OSI Geoid Model (OSGM15) Mean Head. All Co-ordinates are in Irish Transverse Mercator Grid (ITM) as defined by OSI active local GPS station.
 d. Information concerning the position of apparatus shown on this drawing is based on drawings supplied by the utility owners and/or the utility works contractor, whilst every care has been taken in the preparation of this drawing, positions should be taken as approximate and are intended for general guidance only and no representation is made by the NTA as to the accuracy, completeness, sufficiency or otherwise of this drawing and the position of the apparatus. The information contained herein does not purport to be comprehensive or final as the apparatus is subject to being altered and/or superceded. Recipients should not rely on this information. Any liabilities are hereby expressly disclaimed.
 e. The information contained herein has been provided by the NTA but does not purport to be comprehensive or final. Recipients should not rely on the information. Neither the NTA nor any of its directors, officers, employees, agents, stakeholders or advisers make any representation or warranty as to, or accept any liability or responsibility in relation to, the adequacy, accuracy, reasonableness or completeness of the information provided as part of this document or any matter on which the information is based (including but not limited to loss or damage arising as a result of reliance by recipients on the information or any part of it). Any liabilities are hereby expressly disclaimed.

Project Ireland 2040
 Building Ireland's Future

Rev	Date	Drm	Chk'd	App'd	Description
M01	FEB 2023	DS	EE	SMG	ISSUED FOR PHASE 4: PLANNING

Client
NTA
 Údarás Náisiúnta Iompair
 National Transport Authority

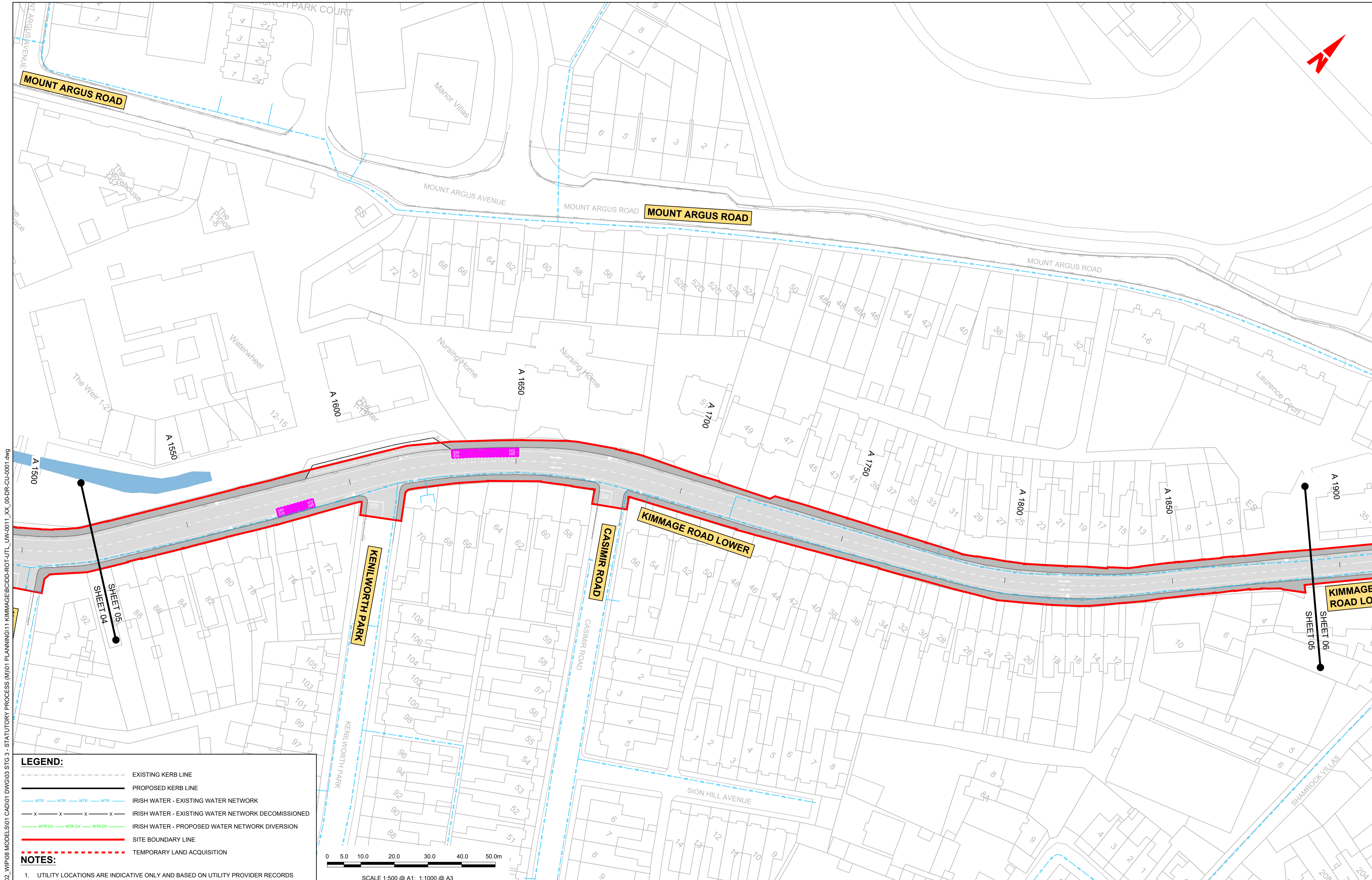
Engineering Designer
PROD
 TYPSA

Date	Scale	Drawn	Checked	Approved
FEB 2023	1:500 @ A1 1:1000 @ A3	DS	EE	SMG
Programme Code	Originator Code	QMS Code		
BCIDD	ROT			

Programme Title BUSCONNECTS DUBLIN CORE BUS CORRIDORS INFRASTRUCTURE WORKS			
Drawing Title KIMMAGE TO CITY CENTRE CORE BUS CORRIDOR SCHEME IW WATER ASSET ALTERATIONS			
Drawing File Name BCIDD-ROT-UTL_UW-0011_XX_00-DR-CU-0004	Sheet Number 04 of 14	Status A	Rev M01

DO NOT SCALE USE FIGURED DIMENSIONS ONLY

\\produbp1\j2019\1917119117-02_WIP\08 MODELS\01 CAD\01 DWG\03 STG 3 - STATUTORY PROCESS (M)\01 PLANNING\11 KIMMAGE\BCIDD-ROT-UTL_UW-0011_XX_00-DR-CU-0001.dwg

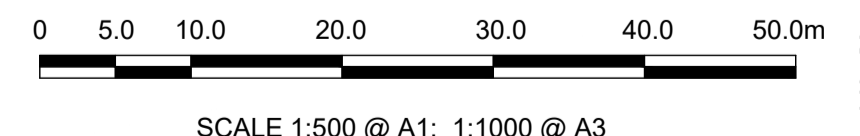


LEGEND:

- EXISTING KERB LINE
- PROPOSED KERB LINE
- WTR IRISH WATER - EXISTING WATER NETWORK
- x-x-x-x IRISH WATER - EXISTING WATER NETWORK DECOMMISSIONED
- WTR DV IRISH WATER - PROPOSED WATER NETWORK DIVERSION
- SITE BOUNDARY LINE
- - - - - TEMPORARY LAND ACQUISITION

NOTES:

- UTILITY LOCATIONS ARE INDICATIVE ONLY AND BASED ON UTILITY PROVIDER RECORDS



\\rodubp1\j2019\19117-02_WIP\08 MODELS\01 CAD\01 PLANNING\11 KIMMAGE\BCIDD-ROT-UTL_UW-0011_XX_00-DR-CU-0001.dwg

Disclaimer

a. © National Transport Authority (NTA) 2022. This drawing is confidential and the copyright in it is owned by NTA. This drawing must not be either loaned, copied or otherwise reproduced in whole or in part or used for any purpose without the prior permission of NTA.

b. This drawing is to be used for the design element identified in the titleblock. Other information shown is to be considered indicative only. The drawing is to be read in conjunction with all other relevant design drawings.

c. O.S. data used for plans are printed under © Ordnance Survey Ireland Government of Ireland. All rights reserved. Licence Number 2022/OSI_NMA_180 National Transport Authority. All elevations are in metres and relate to OSI Geoid Model (OSGM15) Mean Head. All Co-ordinates are in Irish Transverse Mercator Grid (ITM) as defined by OSI active local GPS station.

d. Information concerning the position of apparatus shown on this drawing is based on drawings supplied by the utility owners and/or the utility works contractor, whilst every care has been taken in the preparation of this drawing, positions should be taken as approximate and are intended for general guidance only and no representation is made by the NTA as to the accuracy, completeness, sufficiency or otherwise of this drawing and the position of the apparatus. The information contained herein does not purport to be comprehensive or final as the apparatus is subject to being altered and/or superseded. Recipients should not rely on this information. Any liabilities are hereby expressly disclaimed.

e. The information contained herein has been provided by the NTA but does not purport to be comprehensive or final. Recipients should not rely on the information. Neither the NTA nor any of its directors, officers, employees, agents, stakeholders or advisers make any representation or warranty as to, or accept any liability or responsibility in relation to, the adequacy, accuracy, reasonableness or completeness of the information provided as part of this document or any matter on which the information is based (including but not limited to loss or damage arising as a result of reliance by recipients on the information or any part of it). Any liabilities are hereby expressly disclaimed.



Rev	Date	Drn	Chk'd	App'd	Description
M01	FEB 2023	DS	EE	SMG	ISSUED FOR PHASE 4: PLANNING

Client: **NTA**
Udarás Náisiúnta Iompair
National Transport Authority

Engineering Designer: **CIROD**
TYPSA

Date: FEB 2023
Scale: 1:500 @ A1
1:1000 @ A3

Drawn: DS
Checked: EE
Approved: SMG

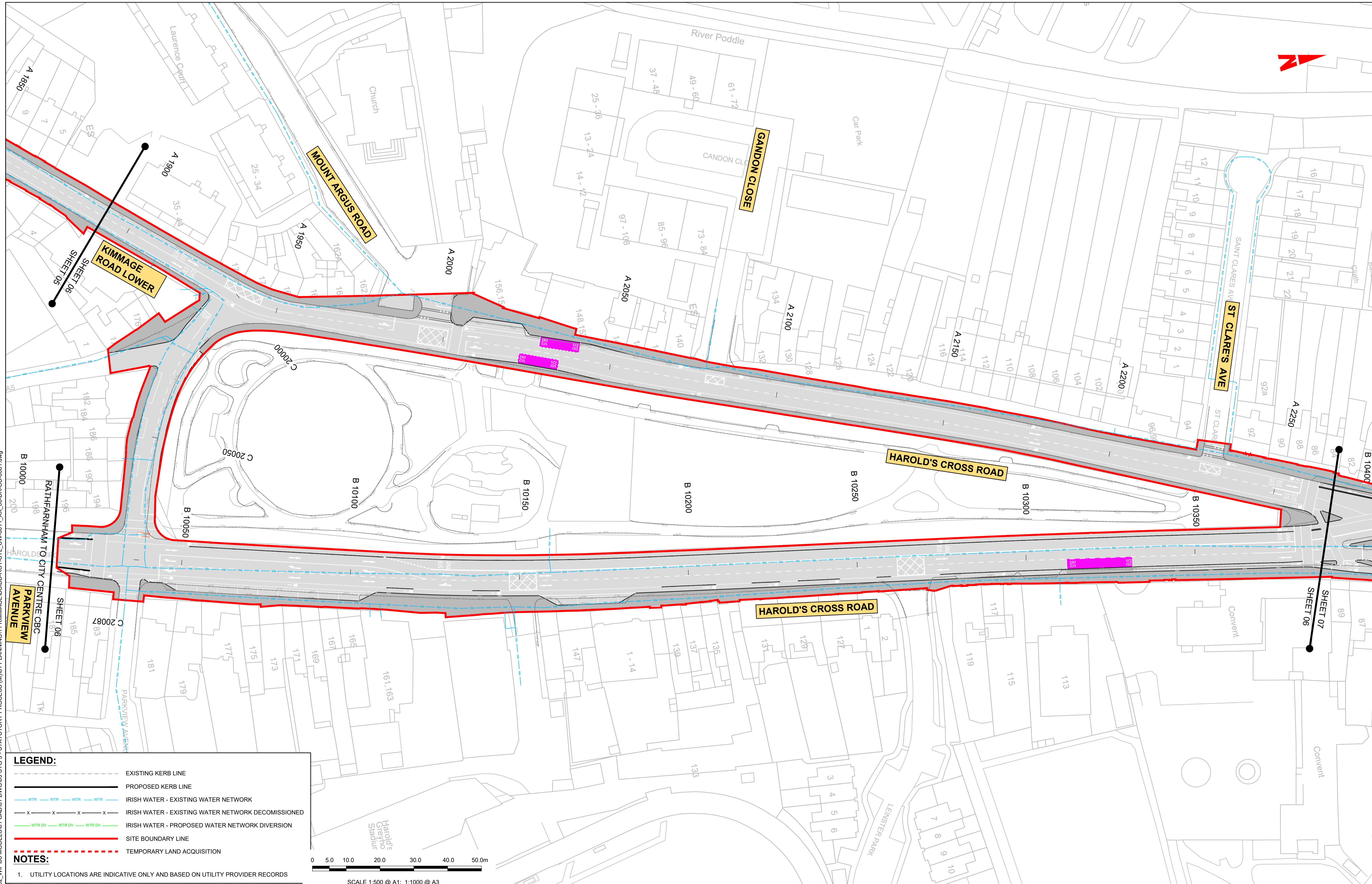
Programme Code: BCIDD
Originator Code: ROT
QMS Code:

Programme Title: **BUSCONNECTS DUBLIN
CORE BUS CORRIDORS INFRASTRUCTURE WORKS**

Drawing Title: **KIMMAGE TO CITY CENTRE CORE BUS CORRIDOR SCHEME
IW WATER ASSET ALTERATIONS**

Drawing File Name: BCIDD-ROT-UTL_UW-0011_XX_00-DR-CU-0005
Sheet Number: 05 of 14
Status: A
Rev: M01

DO NOT SCALE USE FIGURED DIMENSIONS ONLY

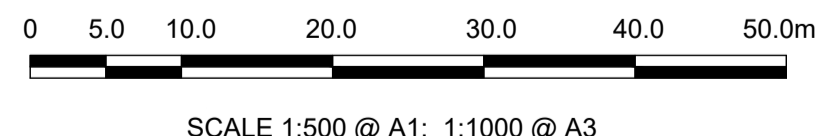


LEGEND:

- EXISTING KERB LINE
- PROPOSED KERB LINE
- IRISH WATER - EXISTING WATER NETWORK
- IRISH WATER - EXISTING WATER NETWORK DECOMMISSIONED
- IRISH WATER - PROPOSED WATER NETWORK DIVERSION
- SITE BOUNDARY LINE
- TEMPORARY LAND ACQUISITION

NOTES:

- UTILITY LOCATIONS ARE INDICATIVE ONLY AND BASED ON UTILITY PROVIDER RECORDS



<p>Rev Date Drm Chk'd App'd Description</p> <table border="1"> <tr> <td>M01</td> <td>FEB 2023</td> <td>DS</td> <td>EE</td> <td>SMG</td> <td>ISSUED FOR PHASE 4: PLANNING</td> </tr> </table>		M01	FEB 2023	DS	EE	SMG	ISSUED FOR PHASE 4: PLANNING	<p>Client</p> <p>Údarás Náisiúnta Iompair National Transport Authority</p>		<p>Engineering Designer</p> <p>Checked: EE Approved: SMG</p>			<p>Programme Title</p> <p>BUSCONNECTS DUBLIN CORE BUS CORRIDORS INFRASTRUCTURE WORKS</p>			
M01	FEB 2023	DS	EE	SMG	ISSUED FOR PHASE 4: PLANNING											
<p>Date Scale</p> <p>FEB 2023 1:500 @ A1 1:1000 @ A3</p>		<p>Drawn Checked Approved</p> <p>DS EE SMG</p>		<p>Drawing Title</p> <p>KIMMAGE TO CITY CENTRE CORE BUS CORRIDOR SCHEME IW WATER ASSET ALTERATIONS</p>												
<p>Programme Code Originator Code</p> <p>BCIDD ROT</p>		<p>QMS Code</p>		<p>Drawing File Name</p> <p>BCIDD-ROT-UTL_UW-0011_XX_00-DR-CU-0006</p>		<p>Sheet Number Status Rev</p> <p>06 of 14 A M01</p>										

DO NOT SCALE USE FIGURED DIMENSIONS ONLY

W:\000000\19101917\19101917-02_WIP\08 MODELS\01 CAD\01 PLANNING\11 KIMMAGE\BCIDD-ROT-UTL_UW-0011_XX_00-DR-CU-0001.dwg
 19/02/2023 11:17:02

Disclaimer

a. © National Transport Authority (NTA) 2022. This drawing is confidential and the copyright in it is owned by NTA. This drawing must not be either loaned, copied or otherwise reproduced in whole or in part or used for any purpose without the prior permission of NTA.

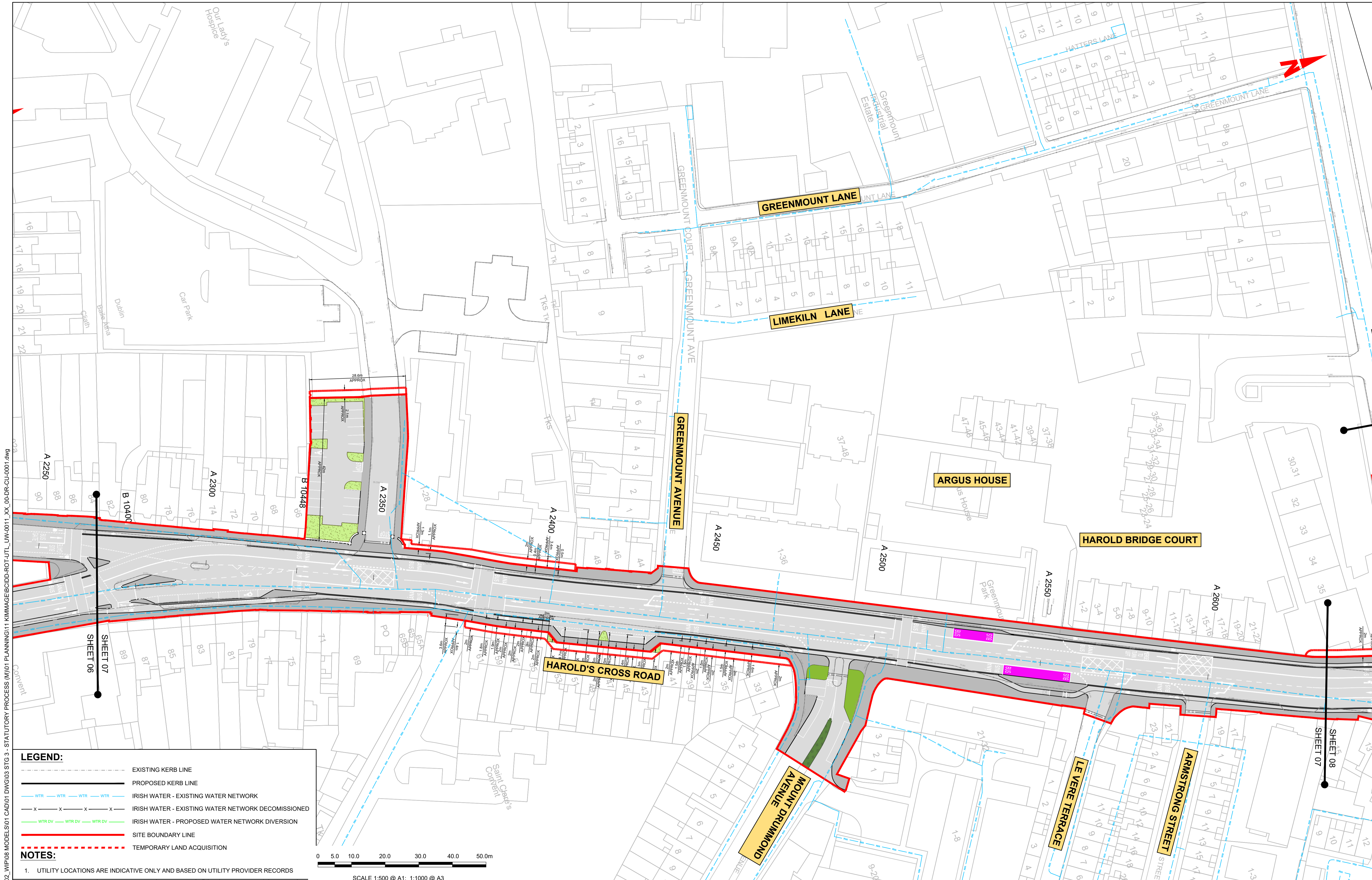
b. This drawing is to be used for the design element identified in the titlebox. Other information shown is to be considered indicative only. The drawing is to be read in conjunction with all other relevant design drawings.

c. O.S. data used for plans are printed under © Ordnance Survey Ireland Government of Ireland. All rights reserved. Licence Number 2022/OSI_NMA_180 National Transport Authority. All elevations are in metres and relate to OSI Geoid Model (OSGM15) Mean Head. All Co-ordinates are in Irish Transverse Mercator Grid (ITM) as defined by OSI active local GPS station.

d. Information concerning the position of apparatus shown on this drawing is based on drawings supplied by the utility owners and/or the utility works contractor, whilst every care has been taken in the preparation of this drawing, positions should be taken as approximate and are intended for general guidance only and no representation is made by the NTA as to the accuracy, completeness, sufficiency or otherwise of this drawing and the position of the apparatus. The information contained herein does not purport to be comprehensive or final as the apparatus is subject to being altered and/or superseded. Recipients should not rely on this information. Any liabilities are hereby expressly disclaimed.

e. The information contained herein has been provided by the NTA but does not purport to be comprehensive or final. Recipients should not rely on the information. Neither the NTA nor any of its directors, officers, employees, agents, stakeholders or advisers make any representation or warranty as to, or accept any liability or responsibility in relation to, the adequacy, accuracy, reasonableness or completeness of the information provided as part of this document or any matter on which the information is based (including but not limited to loss or damage arising as a result of reliance by recipients on the information or any part of it). Any liabilities are hereby expressly disclaimed.



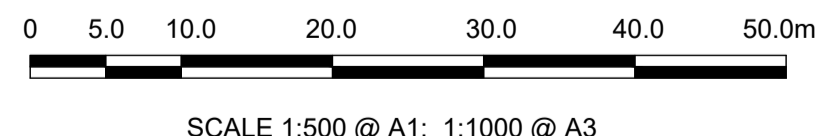


LEGEND:

- EXISTING KERB LINE
- PROPOSED KERB LINE
- IRISH WATER - EXISTING WATER NETWORK
- IRISH WATER - EXISTING WATER NETWORK DECOMMISSIONED
- IRISH WATER - PROPOSED WATER NETWORK DIVERSION
- SITE BOUNDARY LINE
- TEMPORARY LAND ACQUISITION

NOTES:

- UTILITY LOCATIONS ARE INDICATIVE ONLY AND BASED ON UTILITY PROVIDER RECORDS



W:\000000\19117-02_WIP\08 MODELS\01 CAD\01 PLANNING\11 KIMMAGE\BCIDD-ROT-UTL_UW-0011_XX_00-DR-CU-0001.dwg

Disclaimer

a. © National Transport Authority (NTA) 2022. This drawing is confidential and the copyright in it is owned by NTA. This drawing must not be either loaned, copied or otherwise reproduced in whole or in part or used for any purpose without the prior permission of NTA.

b. This drawing is to be used for the design element identified in the titlebox. Other information shown is to be considered indicative only. The drawing is to be read in conjunction with all other relevant design drawings.

c. O.S. data used for plans are printed under © Ordnance Survey Ireland Government of Ireland. All rights reserved. Licence Number 2022/OSI_NMA_180 National Transport Authority. All elevations are in metres and relate to OSI Geoid Model (OSGM15) Mean Head. All Co-ordinates are in Irish Transverse Mercator Grid (ITM) as defined by OSI active local GPS station.

d. Information concerning the position of apparatus shown on this drawing is based on drawings supplied by the utility owners and/or the utility works contractor, whilst every care has been taken in the preparation of this drawing, positions should be taken as approximate and are intended for general guidance only and no representation is made by the NTA as to the accuracy, completeness, sufficiency or otherwise of this drawing and the position of the apparatus. The information contained herein does not purport to be comprehensive or final as the apparatus is subject to being altered and/or superceded. Recipients should not rely on this information. Any liabilities are hereby expressly disclaimed.

e. The information contained herein has been provided by the NTA but does not purport to be comprehensive or final. Recipients should not rely on the information. Neither the NTA nor any of its directors, officers, employees, agents, stakeholders or advisers make any representation or warranty as to, or accept any liability or responsibility in relation to, the adequacy, accuracy, reasonableness or completeness of the information provided as part of this document or any matter on which the information is based (including but not limited to loss or damage arising as a result of reliance by recipients on the information or any part of it). Any liabilities are hereby expressly disclaimed.



Rev	Date	Drn	Chk'd	App'd	Description
M01	FEB 2023	DS	EE	SMG	ISSUED FOR PHASE 4: PLANNING

Client: **NTA**
Údarás Náisiúnta Iompair
National Transport Authority

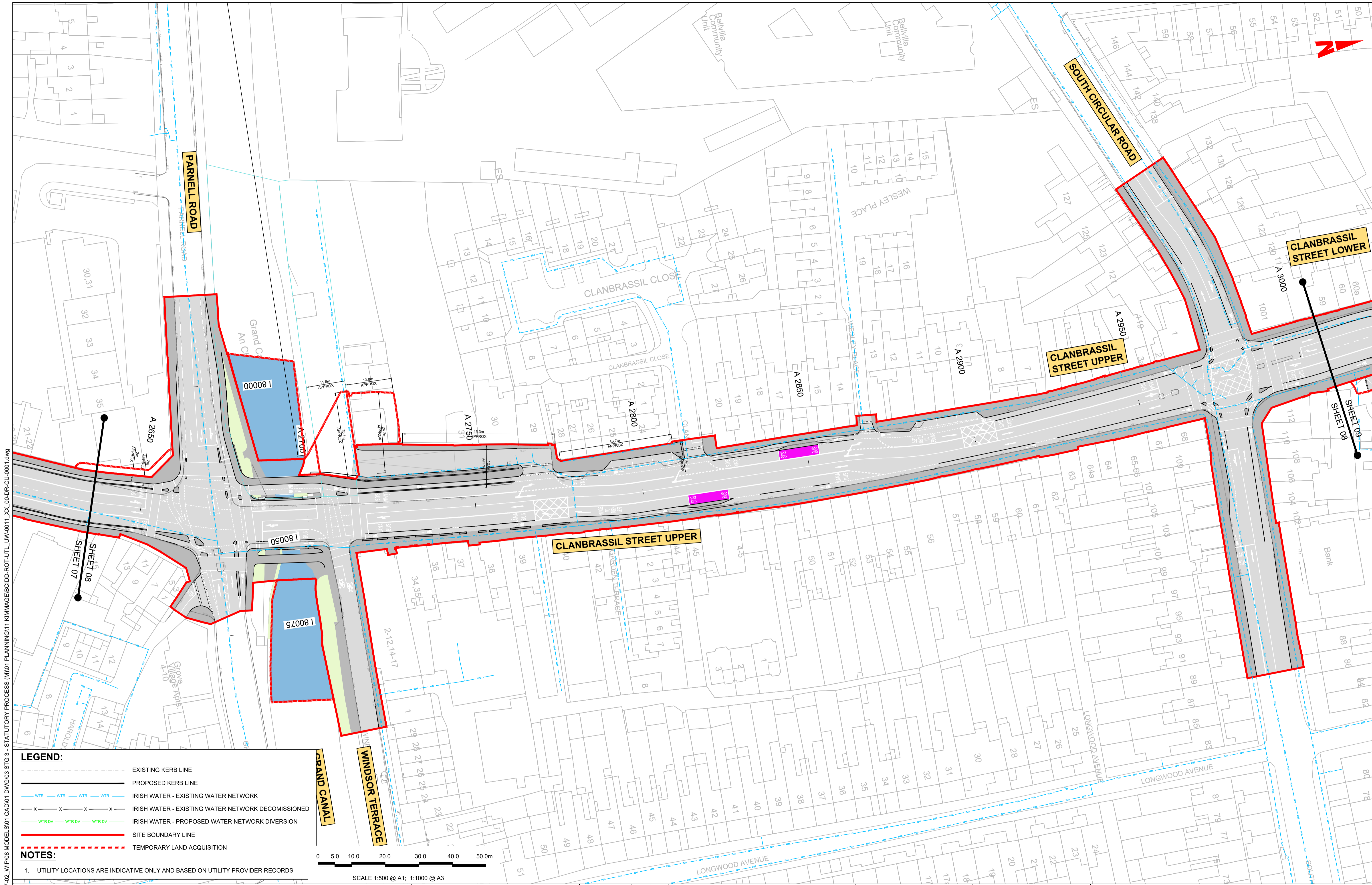
Engineering Designer: **CIROD**
TYPSA

Date: FEB 2023
Scale: 1:500 @ A1, 1:1000 @ A3
Programme Code: BCIDD
Originator Code: ROT

Drawn: DS
Checked: EE
Approved: SMG

Programme Title: BUSCONNECTS DUBLIN CORE BUS CORRIDORS INFRASTRUCTURE WORKS			
Drawing Title: KIMMAGE TO CITY CENTRE CORE BUS CORRIDOR SCHEME IW WATER ASSET ALTERATIONS			
Drawing File Name: BCIDD-ROT-UTL_UW-0011_XX_00-DR-CU-0007	Sheet Number: 07 of 14	Status: A	Rev: M01

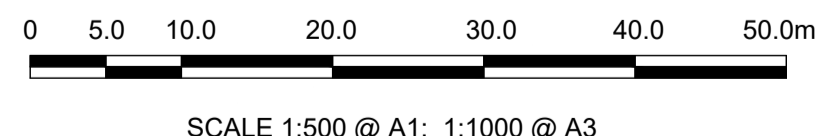
DO NOT SCALE USE FIGURED DIMENSIONS ONLY



- LEGEND:**
- EXISTING KERB LINE
 - PROPOSED KERB LINE
 - IRISH WATER - EXISTING WATER NETWORK
 - IRISH WATER - EXISTING WATER NETWORK DECOMMISSIONED
 - IRISH WATER - PROPOSED WATER NETWORK DIVERSION
 - SITE BOUNDARY LINE
 - TEMPORARY LAND ACQUISITION

NOTES:

- UTILITY LOCATIONS ARE INDICATIVE ONLY AND BASED ON UTILITY PROVIDER RECORDS



\\nodubp1u201911717-02_WIP008 MODELS01 CAD01 PLANNING11 KIMMAGE\BCIDD-ROT-UTL_UW-0011_XX_00-DR-CU-0001.dwg

Disclaimer

a. © National Transport Authority (NTA) 2022. This drawing is confidential and the copyright in it is owned by NTA. This drawing must not be either loaned, copied or otherwise reproduced in whole or in part or used for any purpose without the prior permission of NTA.

b. This drawing is to be used for the design element identified in the titlebox. Other information shown is to be considered indicative only. The drawing is to be read in conjunction with all other relevant design drawings.

c. O.S. data used for plans are printed under © Ordnance Survey Ireland Government of Ireland. All rights reserved. Licence Number 2022/OSI_NMA_180 National Transport Authority. All elevations are in metres and relate to OSI Geoid Model (OSGM15) Mean Head. All Co-ordinates are in Irish Transverse Mercator Grid (ITM) as defined by OSI active local GPS station.

d. Information concerning the position of apparatus shown on this drawing is based on drawings supplied by the utility owners and/or the utility works contractor, whilst every care has been taken in the preparation of this drawing, positions should be taken as approximate and are intended for general guidance only and no representation is made by the NTA as to the accuracy, completeness, sufficiency or otherwise of this drawing and the position of the apparatus. The information contained herein does not purport to be comprehensive or final as the apparatus is subject to being altered and/or superceded. Recipients should not rely on this information. Any liabilities are hereby expressly disclaimed.

e. The information contained herein has been provided by the NTA but does not purport to be comprehensive or final. Recipients should not rely on the information. Neither the NTA nor any of its directors, officers, employees, agents, stakeholders or advisers make any representation or warranty as to, or accept any liability or responsibility in relation to, the adequacy, accuracy, reasonableness or completeness of the information provided as part of this document or any matter on which the information is based (including but not limited to loss or damage arising as a result of reliance by recipients on the information or any part of it). Any liabilities are hereby expressly disclaimed.

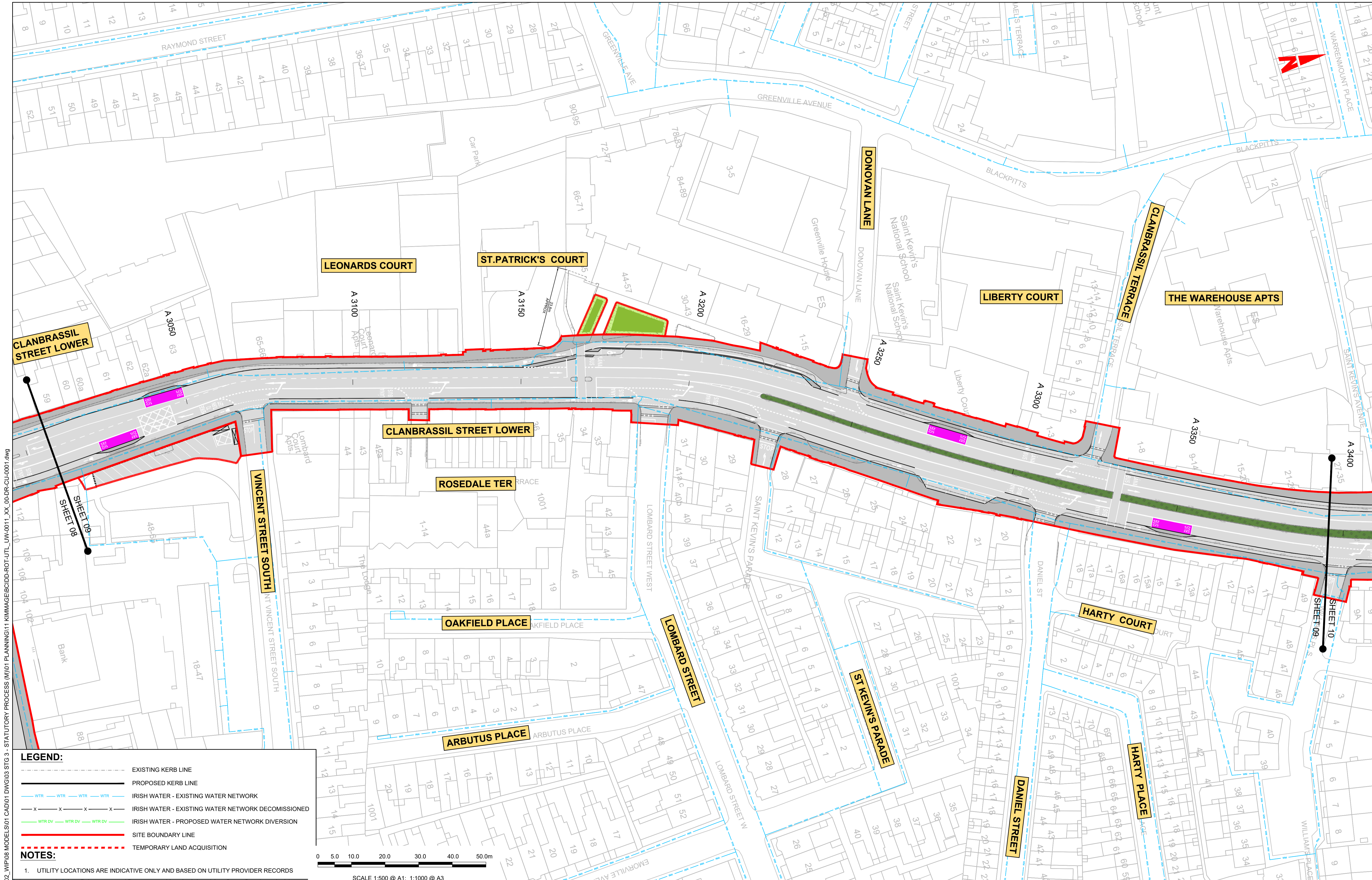


Rev	Date	Drn	Chk'd	App'd	Description
M01	FEB 2023	DS	EE	SMG	ISSUED FOR PHASE 4: PLANNING

 Údarás Náisiúnta Iompair National Transport Authority		Engineering Designer I-ROD TYPSA		
Date	Scale	Drawn	Checked	Approved
FEB 2023	1:500 @ A1 1:1000 @ A3	DS	EE	SMG
Programme Code	Originator Code	QMS Code		
BCIDD	ROT			

Programme Title BUSCONNECTS DUBLIN CORE BUS CORRIDORS INFRASTRUCTURE WORKS			
Drawing Title KIMMAGE TO CITY CENTRE CORE BUS CORRIDOR SCHEME IW WATER ASSET ALTERATIONS			
Drawing File Name	Sheet Number	Status	Rev
BCIDD-ROT-UTL_UW-0011_XX_00-DR-CU-0008	08 of 14	A	M01

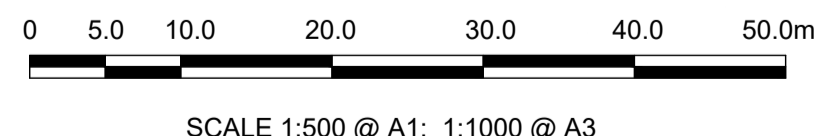
DO NOT SCALE USE FIGURED DIMENSIONS ONLY



- LEGEND:**
- EXISTING KERB LINE
 - PROPOSED KERB LINE
 - IRISH WATER - EXISTING WATER NETWORK
 - IRISH WATER - EXISTING WATER NETWORK DECOMMISSIONED
 - IRISH WATER - PROPOSED WATER NETWORK DIVERSION
 - SITE BOUNDARY LINE
 - TEMPORARY LAND ACQUISITION

NOTES:

- UTILITY LOCATIONS ARE INDICATIVE ONLY AND BASED ON UTILITY PROVIDER RECORDS



Disclaimer

a. © National Transport Authority (NTA) 2022. This drawing is confidential and the copyright in it is owned by NTA. This drawing must not be either loaned, copied or otherwise reproduced in whole or in part or used for any purpose without the prior permission of NTA.

b. This drawing is to be used for the design element identified in the titleblock. Other information shown is to be considered indicative only. The drawing is to be read in conjunction with all other relevant design drawings.

c. O.S. data used for plans are printed under © Ordnance Survey Ireland Government of Ireland. All rights reserved. Licence Number 2022/OSI_NMA_180 National Transport Authority. All elevations are in metres and relate to OSI Geoid Model (OSGM15) Mean Head. All Co-ordinates are in Irish Transverse Mercator Grid (ITM) as defined by OSI active local GPS station.

d. Information concerning the position of apparatus shown on this drawing is based on drawings supplied by the utility owners and/or the utility works contractor, whilst every care has been taken in the preparation of this drawing, positions should be taken as approximate and are intended for general guidance only and no representation is made by the NTA as to the accuracy, completeness, sufficiency or otherwise of this drawing and the position of the apparatus. The information contained herein does not purport to be comprehensive or final as the apparatus is subject to being altered and/or superseded. Recipients should not rely on this information. Any liabilities are hereby expressly disclaimed.

e. The information contained herein has been provided by the NTA but does not purport to be comprehensive or final. Recipients should not rely on the information. Neither the NTA nor any of its directors, officers, employees, agents, stakeholders or advisers make any representation or warranty as to, or accept any liability or responsibility in relation to, the adequacy, accuracy, reasonableness or completeness of the information provided as part of this document or any matter on which the information is based (including but not limited to loss or damage arising as a result of reliance by recipients on the information or any part of it). Any liabilities are hereby expressly disclaimed.



Rev	Date	Drn	Chk'd	App'd	Description
M01	FEB 2023	DS	EE	SMG	ISSUED FOR PHASE 4: PLANNING

Client: **NTA**
Údarás Náisiúnta Iompair
National Transport Authority

Engineering Designer: **PROD**
TYPSA

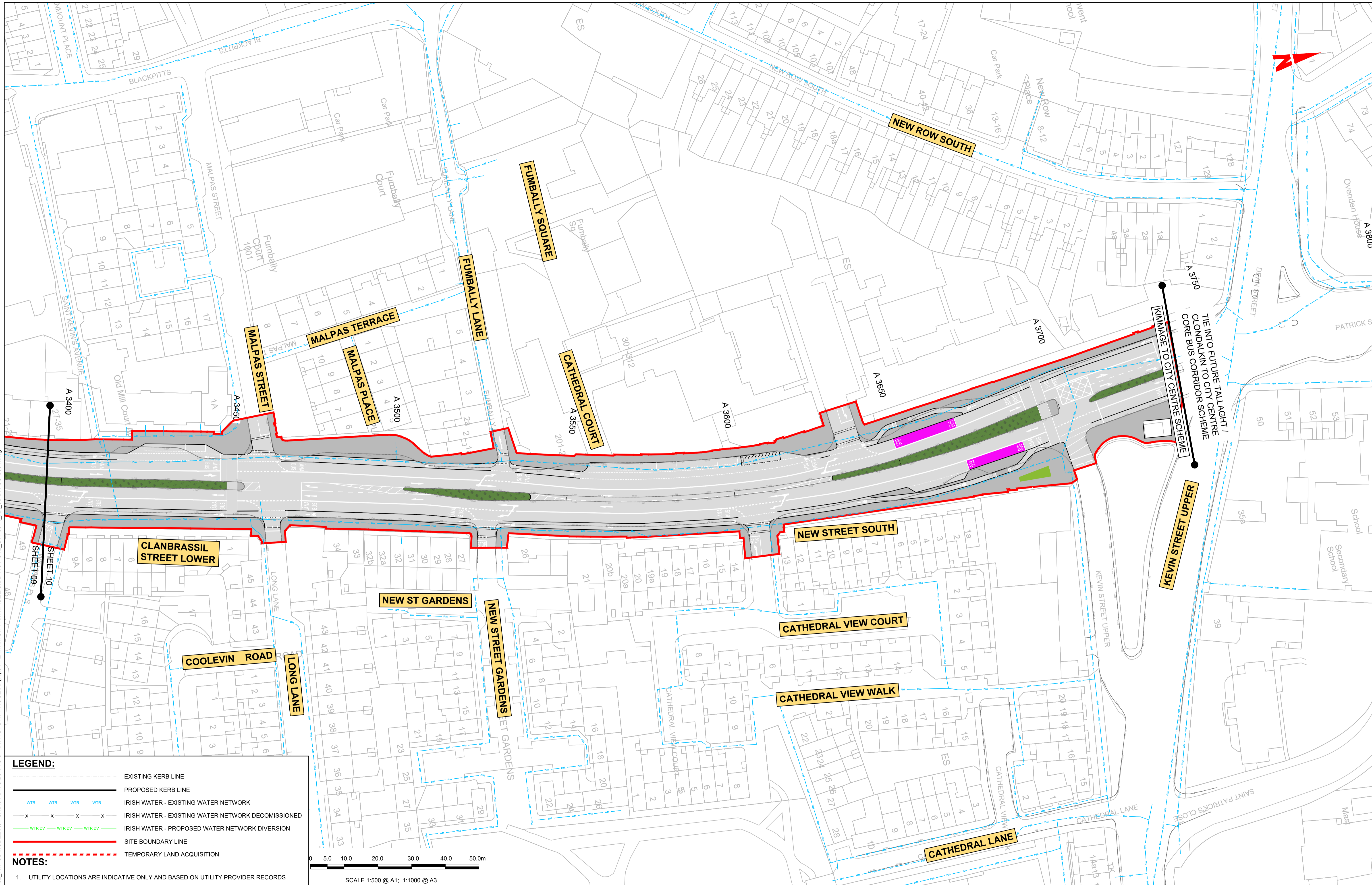
Date: FEB 2023
Scale: 1:500 @ A1
1:1000 @ A3

Programme Code: BCIDD
Originator Code: ROT

Drawn: DS
Checked: EE
Approved: SMG

Programme Title: BUSCONNECTS DUBLIN CORE BUS CORRIDORS INFRASTRUCTURE WORKS			
Drawing Title: KIMMAGE TO CITY CENTRE CORE BUS CORRIDOR SCHEME IW WATER ASSET ALTERATIONS			
Drawing File Name: BCIDD-ROT-UTL_UW-0011_XX_00-DR-CU-0009	Sheet Number: 09 of 14	Status: A	Rev: M01

DO NOT SCALE USE FIGURED DIMENSIONS ONLY



- LEGEND:**
- EXISTING KERB LINE
 - PROPOSED KERB LINE
 - IRISH WATER - EXISTING WATER NETWORK
 - IRISH WATER - EXISTING WATER NETWORK DECOMMISSIONED
 - IRISH WATER - PROPOSED WATER NETWORK DIVERSION
 - SITE BOUNDARY LINE
 - TEMPORARY LAND ACQUISITION

NOTES:

- UTILITY LOCATIONS ARE INDICATIVE ONLY AND BASED ON UTILITY PROVIDER RECORDS

Disclaimer:

a. © National Transport Authority (NTA) 2022. This drawing is confidential and the copyright in it is owned by NTA. This drawing must not be either loaned, copied or otherwise reproduced in whole or in part or used for any purpose without the prior permission of NTA.

b. This drawing is to be used for the design element identified in the titleblock. Other information shown is to be considered indicative only. The drawing is to be read in conjunction with all other relevant design drawings.

c. O.S. data used for plans are printed under © Ordnance Survey Ireland Government of Ireland. All rights reserved. Licence Number 2022/OSI_NMA_180 National Transport Authority. All elevations are in metres and relate to OSI Geoid Model (OSGM15) Mean Head. All Co-ordinates are in Irish Transverse Mercator Grid (ITM) as defined by OSI active local GPS station.

d. Information concerning the position of apparatus shown on this drawing is based on drawings supplied by the utility owners and/or the utility works contractor, whilst every care has been taken in the preparation of this drawing, positions should be taken as approximate and are intended for general guidance only and no representation is made by the NTA as to the accuracy, completeness, sufficiency or otherwise of this drawing and the apparatus is subject to being altered and/or superseded. Recipients should not rely on this information. Any liabilities are hereby expressly disclaimed.

e. The information contained herein has been provided by the NTA but does not purport to be comprehensive or final. Recipients should not rely on the information. Neither the NTA nor any of its directors, officers, employees, agents, stakeholders or advisers make any representation or warranty as to, or accept any liability or responsibility in relation to, the adequacy, accuracy, reasonableness or completeness of the information provided as part of this document or any matter on which the information is based (including but not limited to loss or damage arising as a result of reliance by recipients on the information or any part of it). Any liabilities are hereby expressly disclaimed.

Rev	Date	Drn	Chk'd	App'd	Description
M01	FEB 2023	DS	EE	SMG	ISSUED FOR PHASE 4: PLANNING

Client: **NTA**
Údarás Náisiúnta Iompair
National Transport Authority

Engineering Designer: **FIROD**
TYPSA

Date: FEB 2023
Scale: 1:500 @ A1
1:1000 @ A3

Programme Code: BCIDD
Originator Code: ROT

Drawn: DS
Checked: EE
Approved: SMG

QMS Code

Rev	Date	Drn	Chk'd	App'd	Description
M01	FEB 2023	DS	EE	SMG	ISSUED FOR PHASE 4: PLANNING

Programme Title		BUSCONNECTS DUBLIN CORE BUS CORRIDORS INFRASTRUCTURE WORKS		
Drawing Title		KIMMAGE TO CITY CENTRE CORE BUS CORRIDOR SCHEME IW WATER ASSET ALTERATIONS		
Drawing File Name	Sheet Number	Status	Rev	
BCIDD-ROT-UTL_UW-0011_XX_00-DR-CU-0010	10 of 14	A	M01	

DO NOT SCALE USE FIGURED DIMENSIONS ONLY

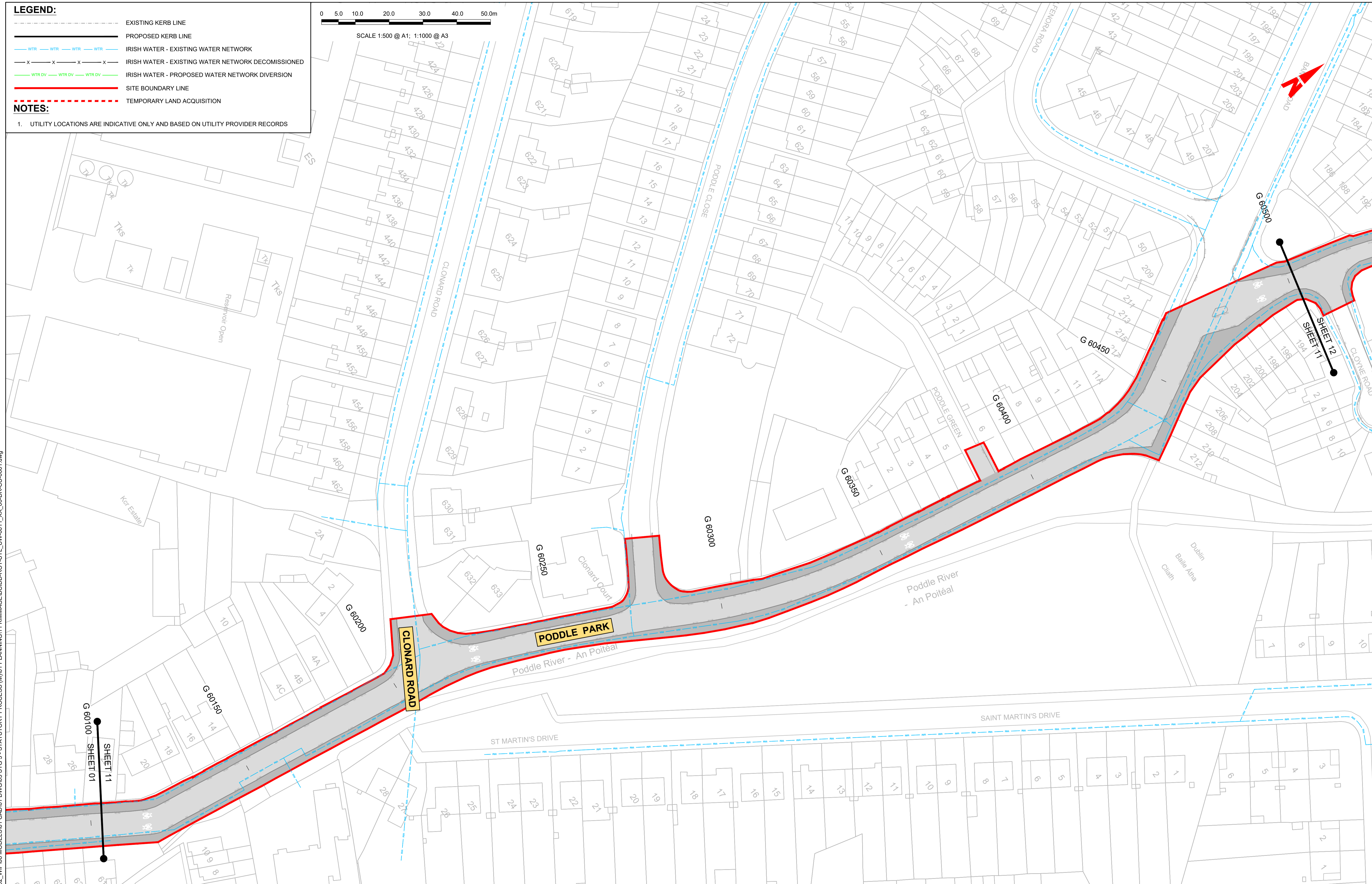
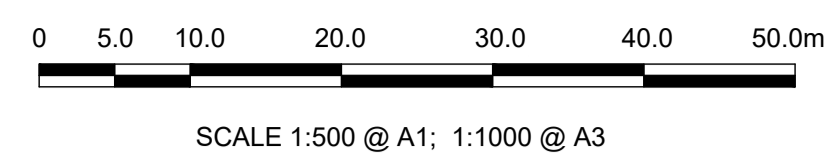
\\noddup1\U201917\17117-02_WIP08 MODELS\01 CAD\01 PLANNING\11 KIMMAGE\BCIDD-ROT-UTL_UW-0011_XX_00-DR-CU-0001.dwg

LEGEND:

- EXISTING KERB LINE
- PROPOSED KERB LINE
- WTR IRISH WATER - EXISTING WATER NETWORK
- x-x-x-x IRISH WATER - EXISTING WATER NETWORK DECOMMISSIONED
- WTR DV IRISH WATER - PROPOSED WATER NETWORK DIVERSION
- SITE BOUNDARY LINE
- - - - - TEMPORARY LAND ACQUISITION

NOTES:

- UTILITY LOCATIONS ARE INDICATIVE ONLY AND BASED ON UTILITY PROVIDER RECORDS



\\wddubp1\j2019\1917119117-02_WIP\08 MODELS\01 CAD\01 STATUTORY PROCESS (M)\01 PLANNING\11 KIMMAGE\BCIDD-ROT\UTL_UW-0011_XX_00-DR-CU-0001.dwg

Disclaimer

a. © National Transport Authority (NTA) 2022. This drawing is confidential and the copyright in it is owned by NTA. This drawing must not be either loaned, copied or otherwise reproduced in whole or in part or used for any purpose without the prior permission of NTA.

b. This drawing is to be used for the design element identified in the titleblock. Other information shown is to be considered indicative only. The drawing is to be read in conjunction with all other relevant design drawings.

c. O.S. data used for plans are printed under © Ordnance Survey Ireland Government of Ireland. All rights reserved. Licence Number 2022/OSI_NMA_180 National Transport Authority. All elevations are in metres and relate to OSI Geoid Model (OSGM15) Mean Head. All Co-ordinates are in Irish Transverse Mercator Grid (ITM) as defined by OSI active local GPS station.

d. Information concerning the position of apparatus shown on this drawing is based on drawings supplied by the utility owners and/or the utility works contractor, whilst every care has been taken in the preparation of this drawing, positions should be taken as approximate and are intended for general guidance only and no representation is made by the NTA as to the accuracy, completeness, sufficiency or otherwise of this drawing and the position of the apparatus. The information contained herein does not purport to be comprehensive or final as the apparatus is subject to being altered and/or superseded. Recipients should not rely on this information. Any liabilities are hereby expressly disclaimed.

e. The information contained herein has been provided by the NTA but does not purport to be comprehensive or final. Recipients should not rely on the information. Neither the NTA nor any of its directors, officers, employees, agents, stakeholders or advisers make any representation or warranty as to, or accept any liability or responsibility in relation to, the adequacy, accuracy, reasonableness or completeness of the information provided as part of this document or any matter on which the information is based (including but not limited to loss or damage arising as a result of reliance by recipients on the information or any part of it). Any liabilities are hereby expressly disclaimed.



Rev	Date	Drn	Chk'd	App'd	Description
M01	FEB 2023	DS	EE	SMG	ISSUED FOR PHASE 4: PLANNING

Client: **NTA**
Údarás Náisiúnta Iompair
National Transport Authority

Date: FEB 2023
Scale: 1:500 @ A1
1:1000 @ A3

Engineering Designer: **CIROD**
TYPSA

Drawn: DS
Checked: EE
Approved: SMG

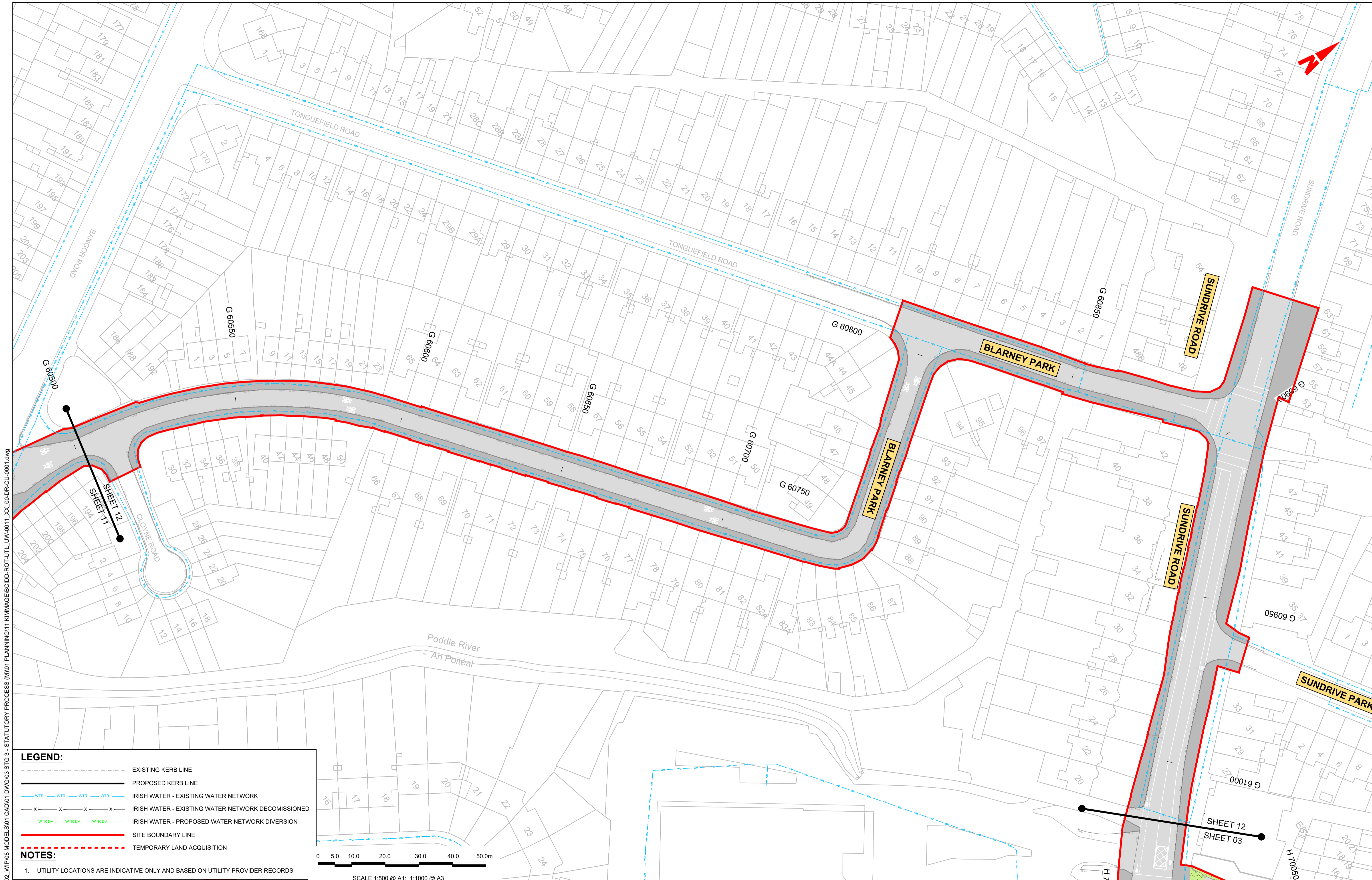
Programme Code: BCIDD
Originator Code: ROT
QMS Code:

Programme Title: **BUSCONNECTS DUBLIN
CORE BUS CORRIDORS INFRASTRUCTURE WORKS**

Drawing Title: **KIMMAGE TO CITY CENTRE CORE BUS CORRIDOR SCHEME
IW WATER ASSET ALTERATIONS**

Drawing File Name: BCIDD-ROT-UTL_UW-0011_XX_00-DR-CU-0011
Sheet Number: 11 of 14
Status: A
Rev: M01

DO NOT SCALE USE FIGURED DIMENSIONS ONLY

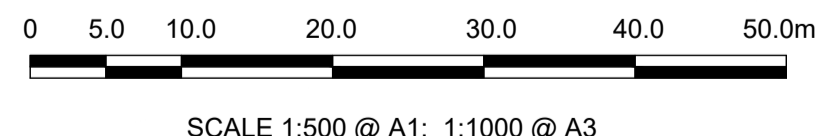


LEGEND:

- EXISTING KERB LINE
- PROPOSED KERB LINE
- IRISH WATER - EXISTING WATER NETWORK
- IRISH WATER - EXISTING WATER NETWORK DECOMMISSIONED
- IRISH WATER - PROPOSED WATER NETWORK DIVERSION
- SITE BOUNDARY LINE
- TEMPORARY LAND ACQUISITION

NOTES:

- UTILITY LOCATIONS ARE INDICATIVE ONLY AND BASED ON UTILITY PROVIDER RECORDS



W:\000000\117-02_WIP\08_MODELS\01_CAD\01_PLANNING\11_KIMMAGE\BCIDD-ROT-UTL_UW-0011_XX_00-DR-CU-0001.dwg
 19/02/2023 11:17:02 WIP\08_MODELS\01_CAD\01_PLANNING\11_KIMMAGE\BCIDD-ROT-UTL_UW-0011_XX_00-DR-CU-0001.dwg

Disclaimer

a. © National Transport Authority (NTA) 2022. This drawing is confidential and the copyright in it is owned by NTA. This drawing must not be either loaned, copied or otherwise reproduced in whole or in part or used for any purpose without the prior permission of NTA.

b. This drawing is to be used for the design element identified in the titlebox. Other information shown is to be considered indicative only. The drawing is to be read in conjunction with all other relevant design drawings.

c. O.S. data used for plans are printed under © Ordnance Survey Ireland Government of Ireland. All rights reserved. Licence Number 2022/OSI_NMA_180 National Transport Authority. All elevations are in metres and relate to OSI Geoid Model (OSGM15) Mean Head. All Co-ordinates are in Irish Transverse Mercator Grid (ITM) as defined by OSI active local GPS station.

d. Information concerning the position of apparatus shown on this drawing is based on drawings supplied by the utility owners and/or the utility works contractor, whilst every care has been taken in the preparation of this drawing, positions should be taken as approximate and are intended for general guidance only and no representation is made by the NTA as to the accuracy, completeness, sufficiency or otherwise of this drawing and the position of the apparatus. The information contained herein does not purport to be comprehensive or final as the apparatus is subject to being altered and/or superceded. Recipients should not rely on this information. Any liabilities are hereby expressly disclaimed.

e. The information contained herein has been provided by the NTA but does not purport to be comprehensive or final. Recipients should not rely on the information. Neither the NTA nor any of its directors, officers, employees, agents, stakeholders or advisers make any representation or warranty as to, or accept any liability or responsibility in relation to, the adequacy, accuracy, reasonableness or completeness of the information provided as part of this document or any matter on which the information is based (including but not limited to loss or damage arising as a result of reliance by recipients on the information or any part of it). Any liabilities are hereby expressly disclaimed.

Rev	Date	Dwn	Chk'd	App'd	Description
M01	FEB 2023	DS	EE	SMG	ISSUED FOR PHASE 4: PLANNING

Client

Engineering Designer

Programme Title

**BUSCONNECTS DUBLIN
CORE BUS CORRIDORS INFRASTRUCTURE WORKS**

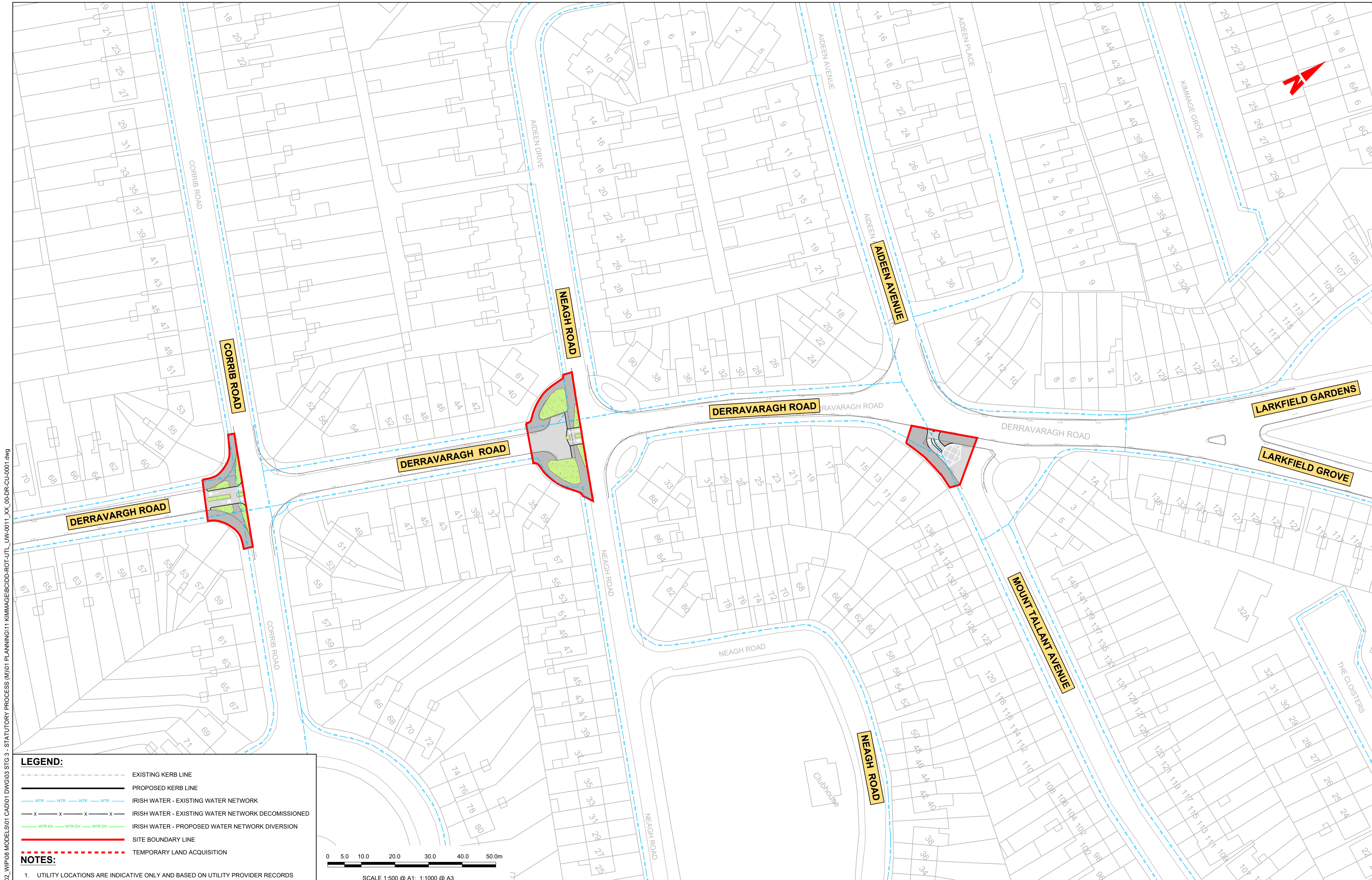
Drawing Title

KIMMAGE TO CITY CENTRE CORE BUS CORRIDOR SCHEME
IW WATER ASSET ALTERATIONS

Date	Scale	Drawn	Checked	Approved
FEB 2023	1:500 @ A1 1:1000 @ A3	DS	EE	SMG
Programme Code	Originator Code	QMS Code		
BCIDD	ROT			

Drawing File Name	Sheet Number	Status	Rev
BCIDD-ROT-UTL_UW-0011_XX_00-DR-CU-0012	12 of 14	A	M01

DO NOT SCALE USE FIGURED DIMENSIONS ONLY

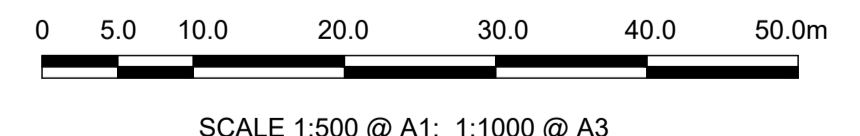


LEGEND:

- EXISTING KERB LINE
- PROPOSED KERB LINE
- IRISH WATER - EXISTING WATER NETWORK
- IRISH WATER - EXISTING WATER NETWORK DECOMMISSIONED
- IRISH WATER - PROPOSED WATER NETWORK DIVERSION
- SITE BOUNDARY LINE
- TEMPORARY LAND ACQUISITION

NOTES:

- UTILITY LOCATIONS ARE INDICATIVE ONLY AND BASED ON UTILITY PROVIDER RECORDS



W:\000000\17-02_WIP\08 MODELS\01 CAD\01 PLANNING\11 KIMMAGE\BCIDD-ROT-UTL_UW-0011_XX_00-DR-CU-0001.dwg

Disclaimer

a. © National Transport Authority (NTA) 2022. This drawing is confidential and the copyright in it is owned by NTA. This drawing must not be either loaned, copied or otherwise reproduced in whole or in part or used for any purpose without the prior permission of NTA.

b. This drawing is to be used for the design element identified in the titleblock. Other information shown is to be considered indicative only. The drawing is to be read in conjunction with all other relevant design drawings.

c. O.S. data used for plans are printed under © Ordnance Survey Ireland Government of Ireland. All rights reserved. Licence Number 2022/OSI_NMA_180 National Transport Authority. All elevations are in metres and relate to OSI Geoid Model (OSGM15) Mean Head. All Co-ordinates are in Irish Transverse Mercator Grid (ITM) as defined by OSI active local GPS station.

d. Information concerning the position of apparatus shown on this drawing is based on drawings supplied by the utility owners and/or the utility works contractor, whilst every care has been taken in the preparation of this drawing, positions should be taken as approximate and are intended for general guidance only and no representation is made by the NTA as to the accuracy, completeness, sufficiency or otherwise of this drawing and the position of the apparatus. The information contained herein does not purport to be comprehensive or final as the apparatus is subject to being altered and/or superseded. Recipients should not rely on this information. Any liabilities are hereby expressly disclaimed.

e. The information contained herein has been provided by the NTA but does not purport to be comprehensive or final. Recipients should not rely on the information. Neither the NTA nor any of its directors, officers, employees, agents, stakeholders or advisers make any representation or warranty as to, or accept any liability or responsibility in relation to, the adequacy, accuracy, reasonableness or completeness of the information provided as part of this document or any matter on which the information is based (including but not limited to loss or damage arising as a result of reliance by recipients on the information or any part of it). Any liabilities are hereby expressly disclaimed.



Rev	Date	Drm	Chk'd	App'd	Description
M01	FEB 2023	DS	EE	SMG	ISSUED FOR PHASE 4: PLANNING

Client: **NTA**
Udárás Náisiúnta Iompair
National Transport Authority

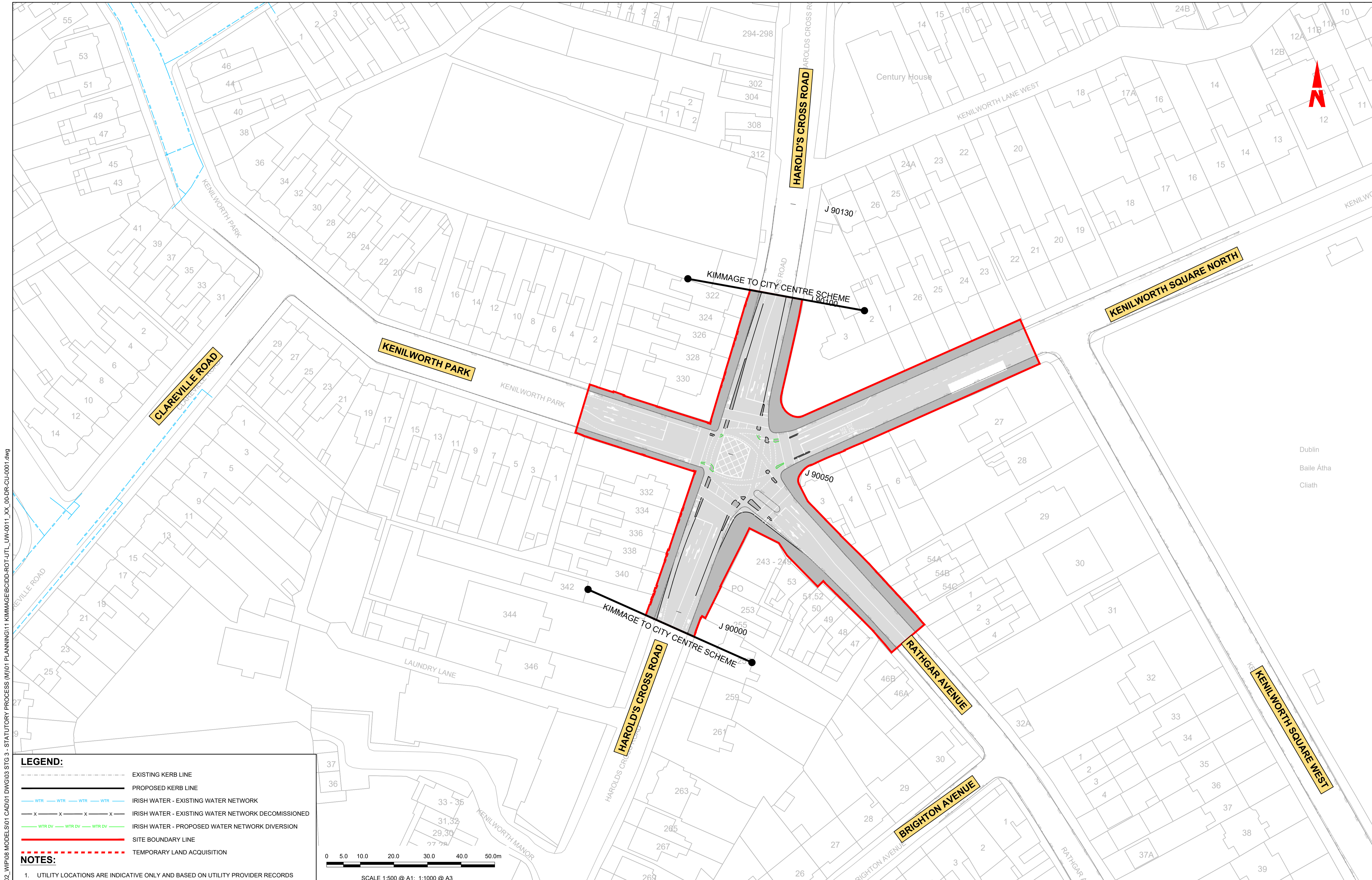
Engineering Designer: **CIROD**
TYPSA

Date: FEB 2023 | Scale: 1:500 @ A1, 1:1000 @ A3 | Drawn: DS | Checked: EE | Approved: SMG

Programme Code: BCIDD | Originator Code: ROT | QMS Code:

Programme Title: BUSCONNECTS DUBLIN CORE BUS CORRIDORS INFRASTRUCTURE WORKS			
Drawing Title: KIMMAGE TO CITY CENTRE CORE BUS CORRIDOR SCHEME IW WATER ASSET ALTERATIONS			
Drawing File Name: BCIDD-ROT-UTL_UW-0011_XX_00-DR-CU-0013	Sheet Number: 13 of 14	Status: A	Rev: M01

DO NOT SCALE USE FIGURED DIMENSIONS ONLY



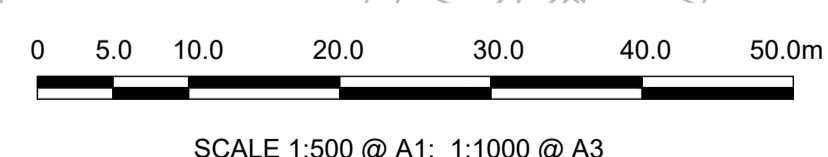
\\wddubhp1\j2019\191719117-02_WIP\08 MODELS\01 CAD\01 PLANNING\11 KIMMAGE\BCIDD-ROT-UTL_UW-0011_XX_00-DR-CU-0001.dwg

LEGEND:

- EXISTING KERB LINE
- PROPOSED KERB LINE
- IRISH WATER - EXISTING WATER NETWORK
- IRISH WATER - EXISTING WATER NETWORK DECOMMISSIONED
- IRISH WATER - PROPOSED WATER NETWORK DIVERSION
- SITE BOUNDARY LINE
- TEMPORARY LAND ACQUISITION

NOTES:

- UTILITY LOCATIONS ARE INDICATIVE ONLY AND BASED ON UTILITY PROVIDER RECORDS



Disclaimer

a. © National Transport Authority (NTA) 2022. This drawing is confidential and the copyright in it is owned by NTA. This drawing must not be either loaned, copied or otherwise reproduced in whole or in part or used for any purpose without the prior permission of NTA.

b. This drawing is to be used for the design element identified in the titleblock. Other information shown is to be considered indicative only. The drawing is to be read in conjunction with all other relevant design drawings.

c. O.S. data used for plans are printed under © Ordnance Survey Ireland Government of Ireland. All rights reserved. Licence Number 2022/OSI_NMA_180 National Transport Authority. All elevations are in metres and relate to OSI Geoid Model (OSGM15) Mean Head. All Co-ordinates are in Irish Transverse Mercator Grid (ITM) as defined by OSI active local GPS station.

d. Information concerning the position of apparatus shown on this drawing is based on drawings supplied by the utility owners and/or the utility works contractor, whilst every care has been taken in the preparation of this drawing, positions should be taken as approximate and are intended for general guidance only and no representation is made by the NTA as to the accuracy, completeness, sufficiency or otherwise of this drawing and the position of the apparatus. The information contained herein does not purport to be comprehensive or final as the apparatus is subject to being altered and/or superseded. Recipients should not rely on this information. Any liabilities are hereby expressly disclaimed.

e. The information contained herein has been provided by the NTA but does not purport to be comprehensive or final. Recipients should not rely on the information. Neither the NTA nor any of its directors, officers, employees, agents, stakeholders or advisers make any representation or warranty as to, or accept any liability or responsibility in relation to, the adequacy, accuracy, reasonableness or completeness of the information provided as part of this document or any matter on which the information is based (including but not limited to loss or damage arising as a result of reliance by recipients on the information or any part of it). Any liabilities are hereby expressly disclaimed.



Rev	Date	Drm	Chk'd	App'd	Description
M01	FEB 2023	DS	EE	SMG	ISSUED FOR PHASE 4: PLANNING

Client: **NTA**
Udarás Náisiúnta Iompair
National Transport Authority

Engineering Designer: **CIROD**
TYPSA

Date: FEB 2023
Scale: 1:500 @ A1
1:1000 @ A3

Drawn: DS
Checked: EE
Approved: SMG

Programme Code: BCIDD
Originator Code: ROT
QMS Code:

Programme Title BUSCONNECTS DUBLIN CORE BUS CORRIDORS INFRASTRUCTURE WORKS			
Drawing Title KIMMAGE TO CITY CENTRE CORE BUS CORRIDOR SCHEME IW WATER ASSET ALTERATIONS			
Drawing File Name BCIDD-ROT-UTL_UW-0011_XX_00-DR-CU-0014	Sheet Number 14 of 14	Status A	Rev M01

DO NOT SCALE USE FIGURED DIMENSIONS ONLY